



Sony Ericsson

Working Instructions

- mechanical -



Xperia™ X10 mini

E10i, E10a



CONTENTS

1	Exterior Views.....	4
1.1	X10	4
2	Tools	5
3	Disassembly.....	6
3.1	Cover Back	6
3.2	Cap Battery.....	6
3.3	Antenna Main.....	7
3.4	Inner Frame	8
3.5	Cover Front.....	10
3.6	Support LCD & Main PBA.....	11
4	Replacement	13
4.1	Cover Back	13
4.2	Cap Battery.....	13
4.3	Antenna Main.....	13
4.4	Inner Frame	13
4.5	Cover Front.....	14
4.6	Support LCD.....	14
4.7	Battery Assy	15
4.8	Camera 5 MPixel.....	17
4.9	Cap RF	19
4.10	Cap USB.....	20
4.11	Co-Brand.....	22
4.12	Display 2.55 TFT	24
4.13	Ear speaker & Adhesive Earspeaker	26
4.14	Foil Grounding Camera	28
4.15	Foil Insulation.....	29
4.16	Gasket Camera.....	30
4.17	Gasket Camera/Flash.....	31
4.18	Gasket Conductive 2,0x2,0	32
4.19	Gasket Conductive 3,1x2,0	33
4.20	Gasket Conductive 3,8x2,3	34
4.21	Gasket Conductive 5,6x1,9	35
4.22	Gasket Earspeaker	36
4.23	Gasket Loudspeaker	37
4.24	Gasket Mic	38
4.25	Gasket Mic Channel	39
4.26	Gasket SIM FPC.....	40
4.27	Gasket Touch FPC	41



4.28	Label MicroSD	42
4.29	Label Mobile Phone.....	43
4.30	Mesh Back Cover	44
4.31	Shield Can Lid BB	45
4.32	Shield Can Lid Camera	46
4.33	Shield Can Lid Radio	47
4.34	Shield Can Lid WLAN.....	48
4.35	SIM FPC & Adhesive SIM FPC.....	49
4.36	Tape Water Ingress	51
4.37	Water Indicator 3 x 3	52
4.38	Window Camera	53
4.39	Board Swap - Replacement	55
4.40	Board Swap – Change Label	55
4.41	Board Swap – Customize of Software	55
5	Reassembly.....	56
5.1	Support LCD & Main PBA.....	56
5.2	Cover Front.....	57
5.3	Inner Frame	57
5.4	Antenna Main.....	59
5.5	Cap Battery	59
5.6	Cover Back	60
6	Country of Origin Barcodes for Brazil.....	61
7	Revision History	62

**For general information about mechanical repair related issues, refer to
1220-1333: Generic Repair Manual - mechanical**



1 Exterior Views

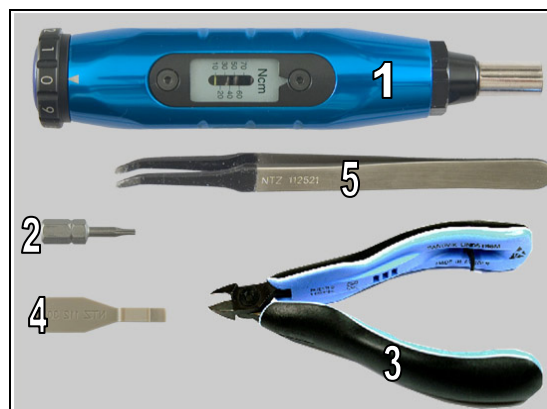
1.1 X10



2 Tools

SPECIAL TOOLS

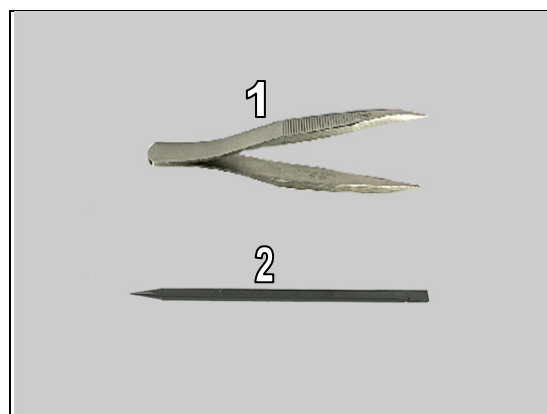
1. Torque Screwdriver
2. Bits (T4)
3. Pliers
4. Front Opening Tool
5. Flex Film Assembly Tool



For part no's on the tools above, refer to the 'Tools Catalogue/Matrix'!

STANDARD TOOLS

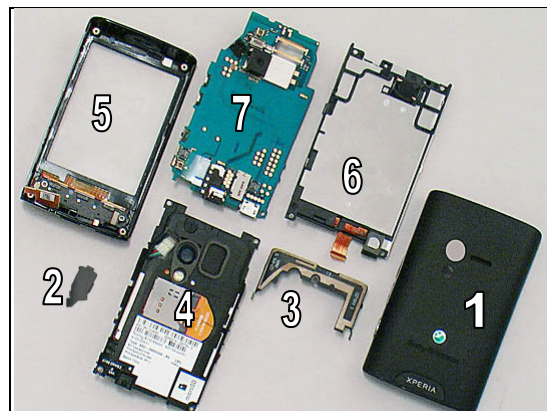
1. Tweezers
2. Nylon Pointer



3 Disassembly

The disassembly is done in the following order:

1. Cover Back
2. Cap Battery
3. Antenna Main
4. Inner Frame
5. Cover Front
6. Support LCD
7. Main PBA

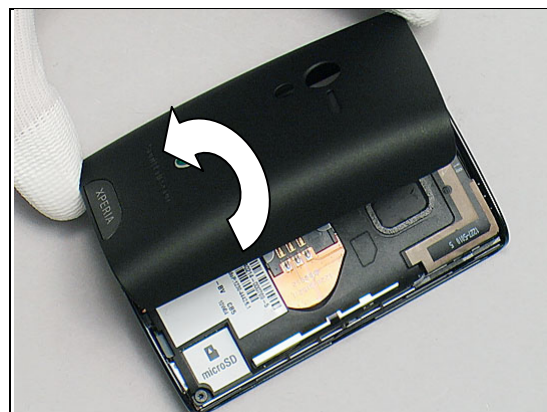


3.1 Cover Back

Unsnap the three hooks on the right side with your fingers.

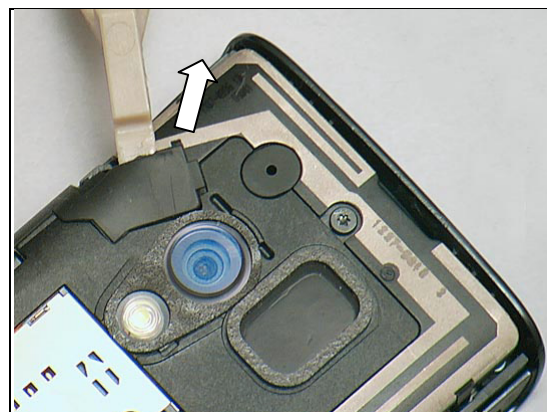


Turn the Cover Back over to release the other hooks and remove it.



3.2 Cap Battery

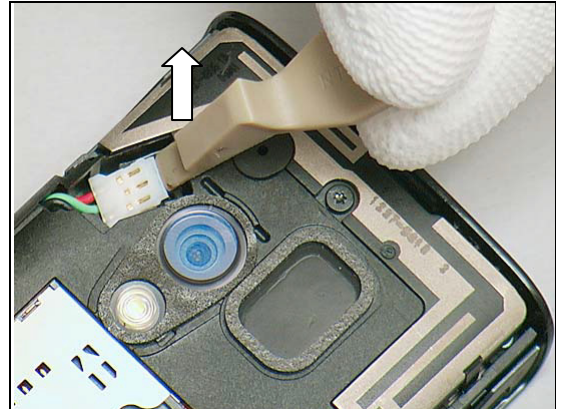
Remove the Cap Battery with a Front Opening Tool.





Disassembly

Disconnect the battery connector with the Front Opening Tool.



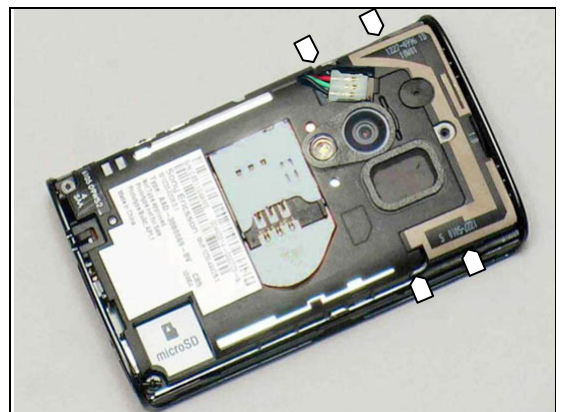
3.3 Antenna Main

Remove the screw with a screwdriver with T4 bits.

Scrap the screw. The screw shall not be reused.



The Antenna Main is attached by four hooks.

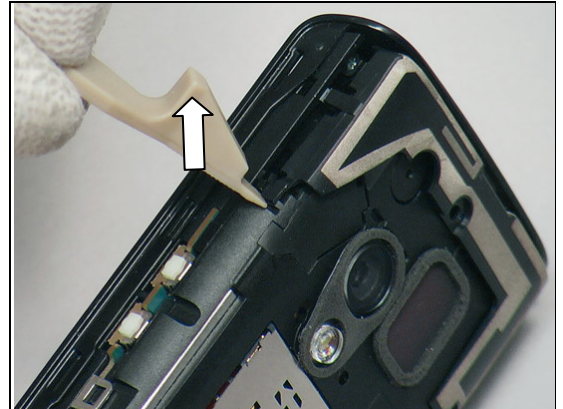


Unsnap the first hook by using a Front Opening Tool.



Disassembly

Release the second hook on the same side.



Gently lift the Antenna Main to release the hooks on the other side and remove it.



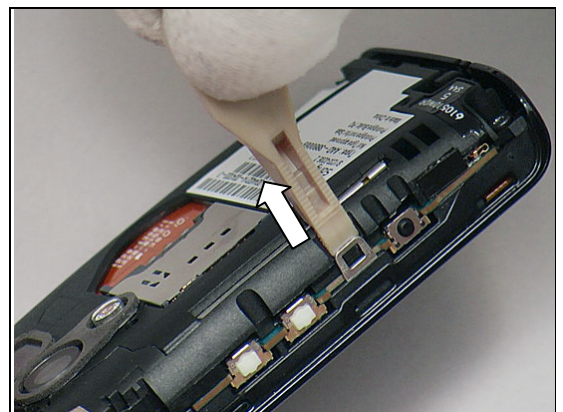
3.4 Inner Frame

Remove the four screws with a screwdriver with T4 bits.

Scrap the screws. The screws shall not be reused.

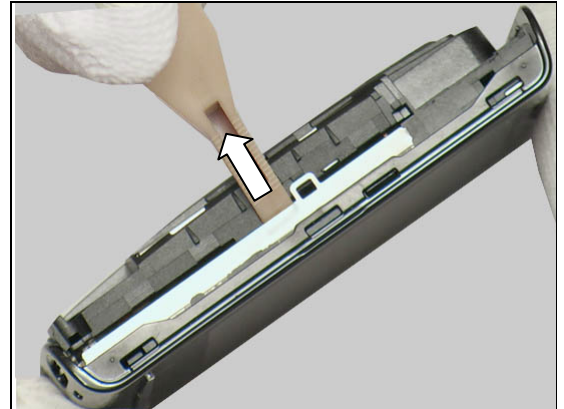


Unsnap the Inner Frame by using a Front Opening Tool.



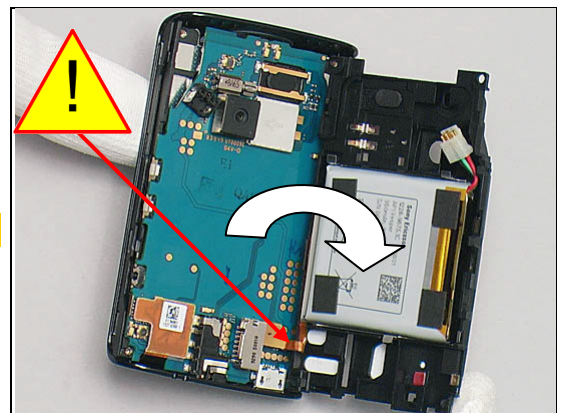
Disassembly

Unsnap the hook by using a Front Opening Tool on the right side.

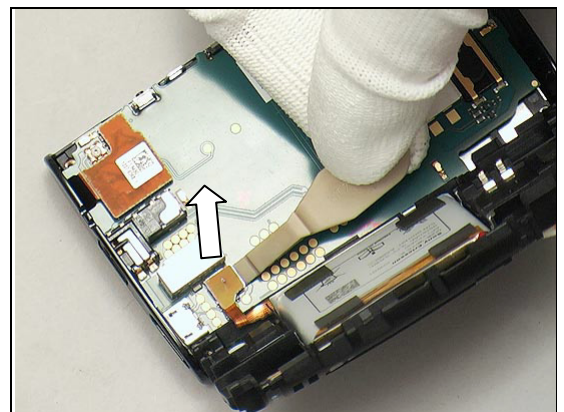


Lift the Inner Frame to approximately 90 degrees.

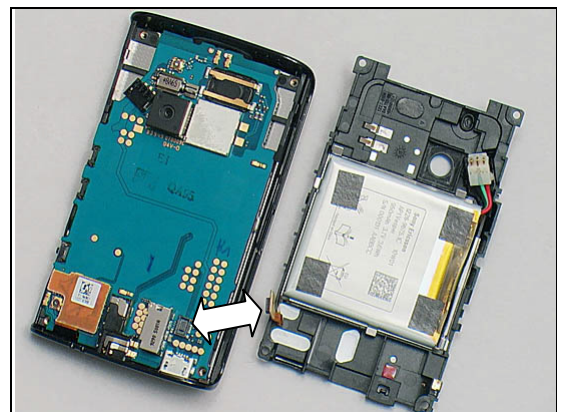
Do not stretch the flex film.



Disconnect the BtB connector with a Front Opening Tool.



Remove the Inner Frame.

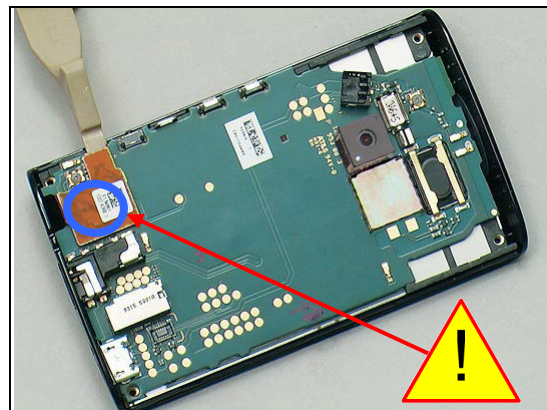


Disassembly

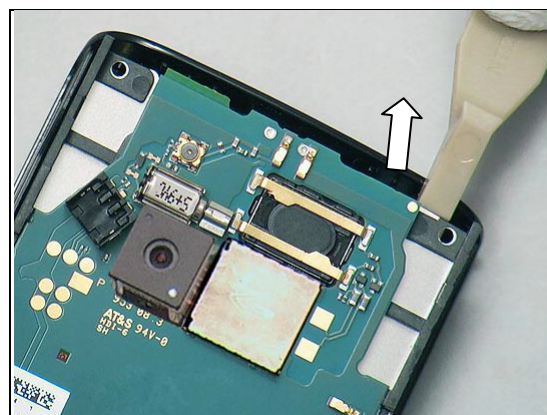
3.5 Cover Front

Disconnect the BtB connector with a Front Opening Tool.

Do not press on the marked area.

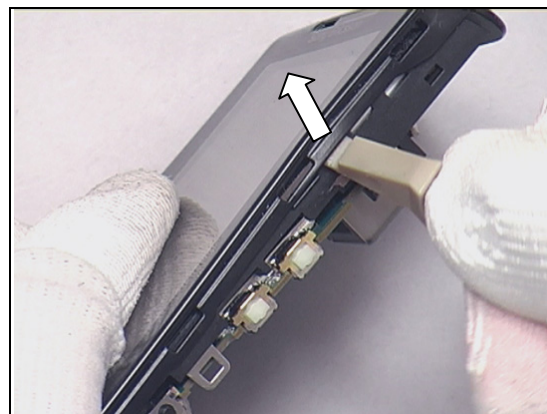


Release the Cover Front from the top side.



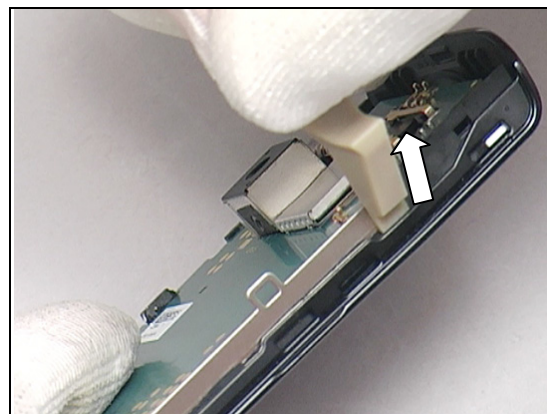
Release the hook by using the Front Opening Tool **gently**.

The hooks in the Front Cover are brittle. Be careful.



Do the same on the opposite side.

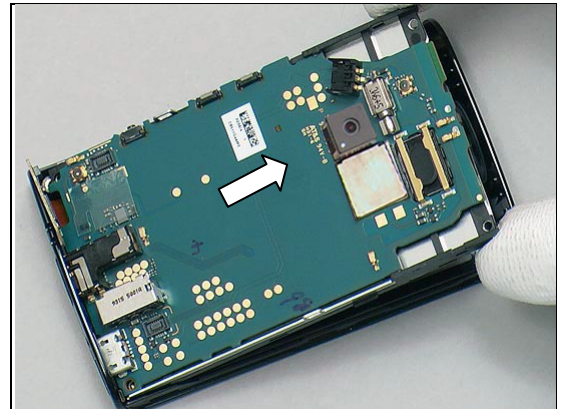
The hooks in the Front Cover are brittle. Be careful.





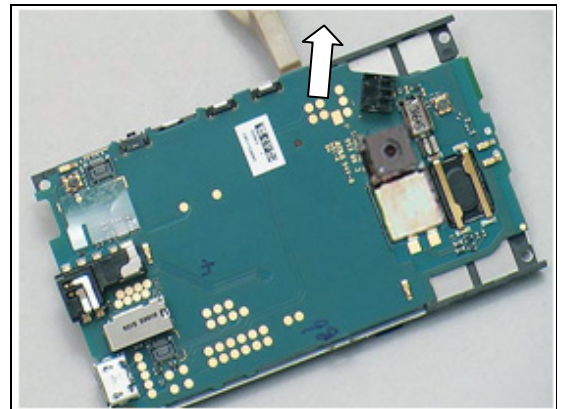
Disassembly

Remove the main PBA from the Cover Front gently.

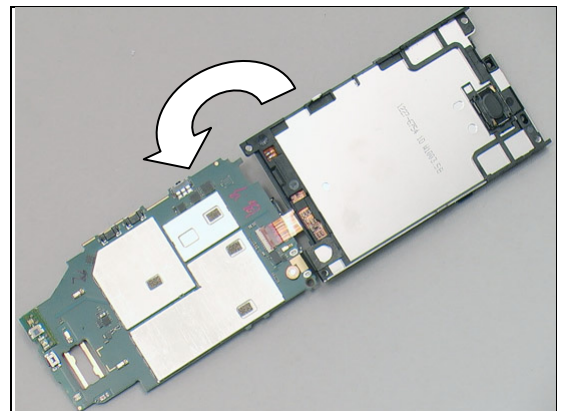


3.6 Support LCD & Main PBA

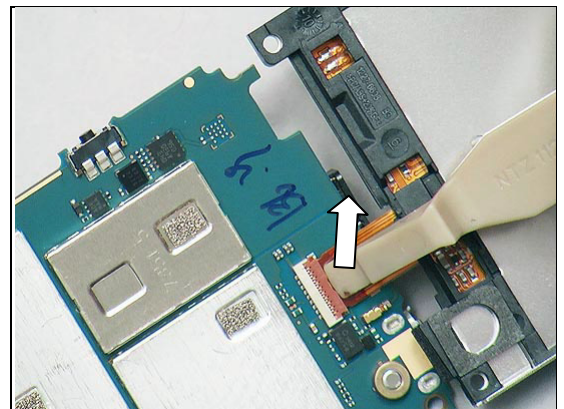
Release the Main PBA from the Support LCD.



Turn over the Main PBA.

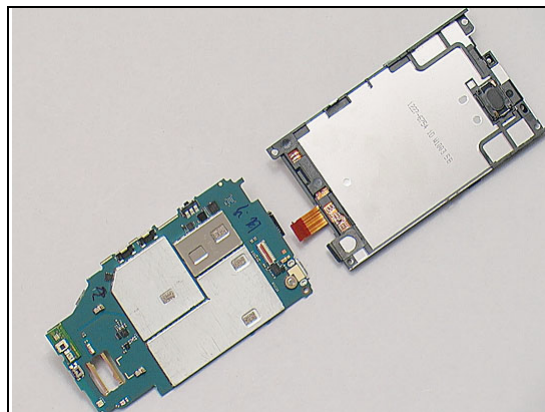


Disconnect the ZIF Connector with a Front Opening Tool .



Disassembly

Separate the Support LCD and the Main PBA.





4 Replacement

4.1 Cover Back

Follow the 3.1 Disassembly instructions!

Prepare the new Cover Back.

Follow the 5.6 Reassembly instructions!



4.2 Cap Battery

Follow the 3.1 – 3.2 Disassembly instructions!

Prepare the new Cap Battery.

Follow the 5.5 – 5.6 Reassembly instructions!



4.3 Antenna Main

Follow the 3.1 – 3.3 Disassembly instructions!

Prepare the new Antenna Main.

Follow the 5.4 – 5.6 Reassembly instructions!



4.4 Inner Frame

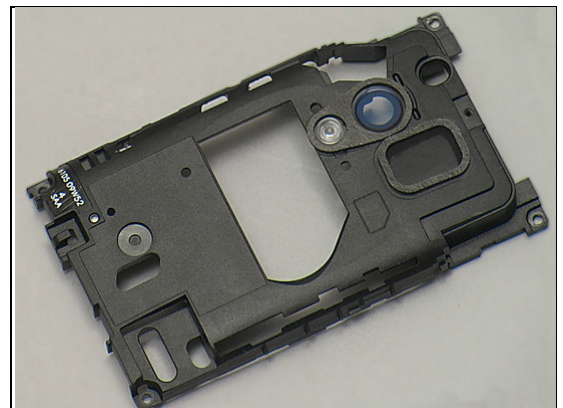
Follow the 3.1 – 3.4 Disassembly instructions!

Follow the 4.7 Removal instructions.

Prepare the new Inner Frame.

Follow the 4.7 Installation instructions.

Follow the 5.3 – 5.6 Reassembly instructions!



Replacement

4.5 Cover Front

Follow the 3.1 – 3.5 Disassembly instructions!

Prepare the new Cover Front.

Follow the 5.2 – 5.6 Reassembly instructions!



4.6 Support LCD

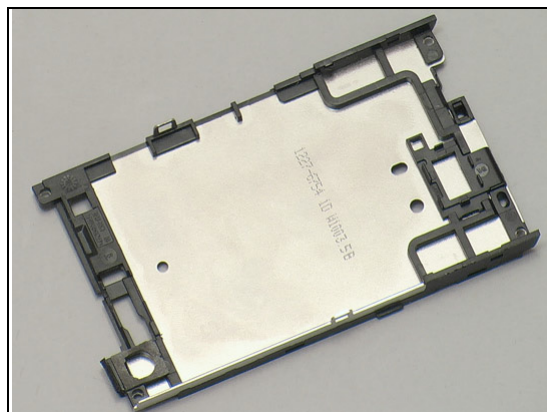
Follow the 3.1 – 3.6 Disassembly instructions!

Follow the 4.12 Removal instructions.

Prepare the new Support LCD.

Follow the 4.12 Installation instructions.

Follow the 5.1 – 5.6 Reassembly instructions!



Replacement

4.7 Battery Assy

Follow the 3.1 – 3.4 Disassembly instructions!

Follow the 4.35 Removal instructions!

Prepare the new Battery Assy.

Follow the 4.35 Installation instructions!

Follow the 5.3 – 5.6 Reassembly instructions!.



REMOVAL

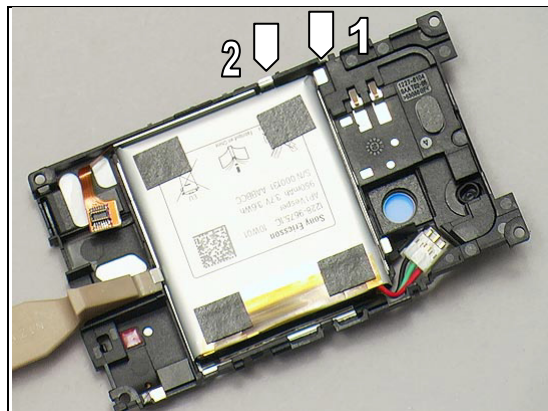
It is important not to harm the battery with sharp tools during disassembly or reassembly.



Press with a finger on the SIM FPC (area marked with red) at the same time as ...



... the two hooks in the upper right corner of the Battery Assy is unsnapped with a Front Opening Tool.

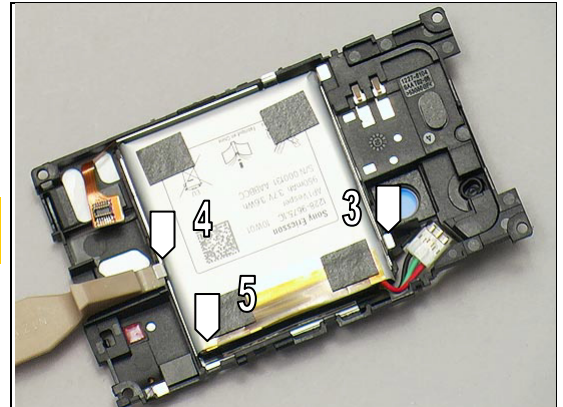




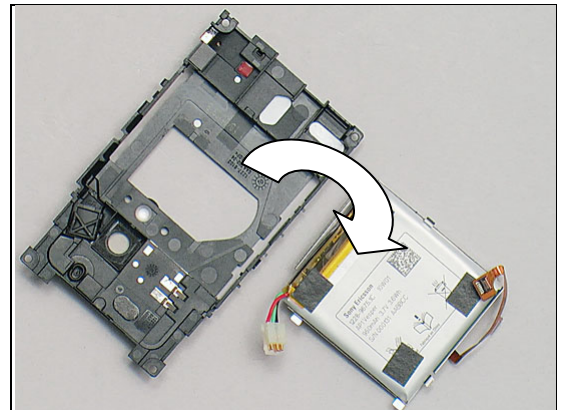
Replacement: Battery Assy

Unsnap the three remaining hooks of the Battery Assy.

Be careful with the SIM FPC flex with the BtB when the assembly and the flex is released.

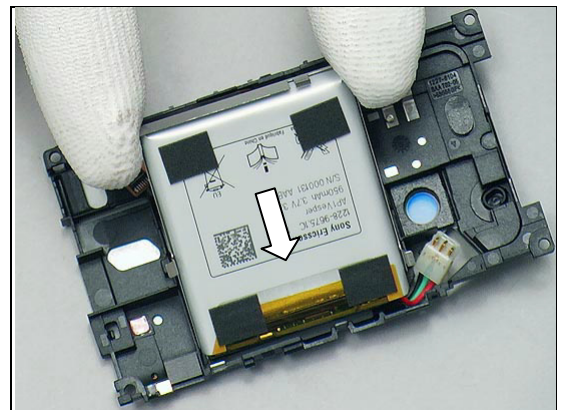


Remove the Battery Assy from the Inner Frame.

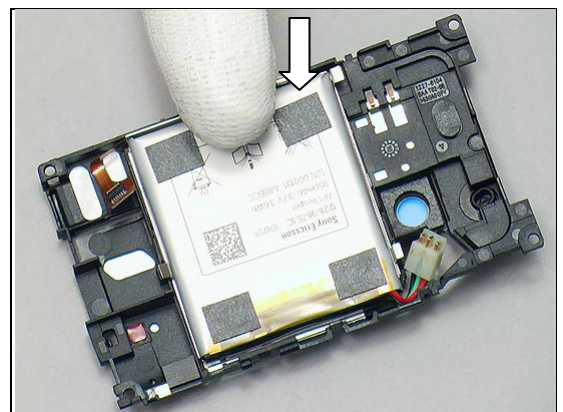


INSTALLATION

Place the Battery Assy at approximately 30 degrees.



Press to snap the Battery Assy.





Replacement

4.8 Camera 5 MPixel

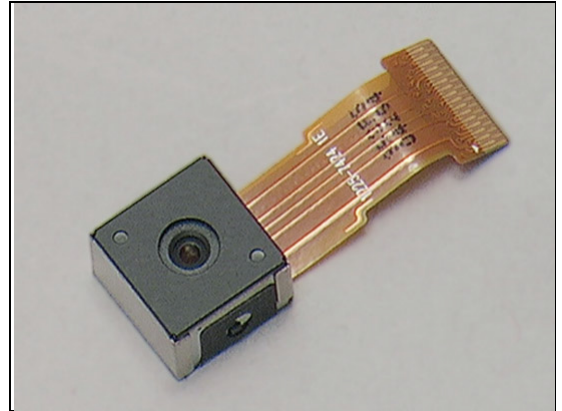
Follow the 3.1 – 3.4 Disassembly instructions!

Follow the 4.32 Removal instructions!

Prepare the new Camera 5 MPixel.

Follow the 4.32 Installation instructions!

Follow the 5.3 – 5.6 Reassembly instructions!

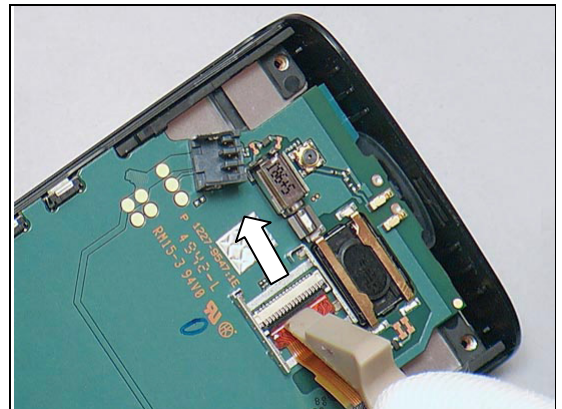


REMOVAL

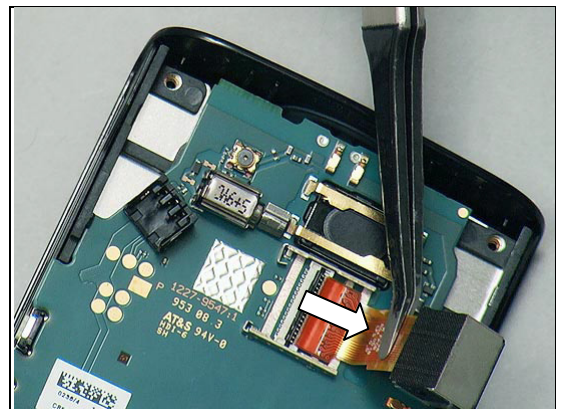
Turn over the Camera 5 MPixel.



Disconnect the ZIF Connector with a Front Opening Tool.



Remove the Camera 5 MPixel with a Flex Film Assembly Tool.

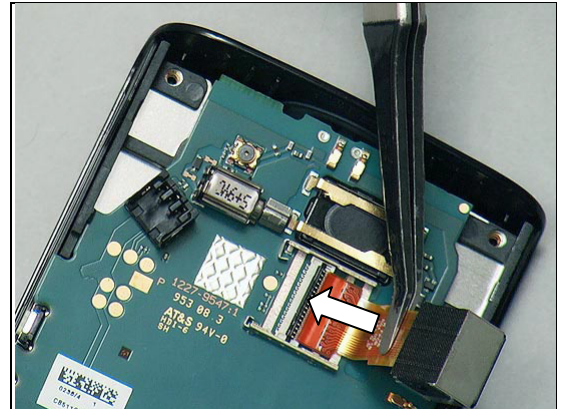




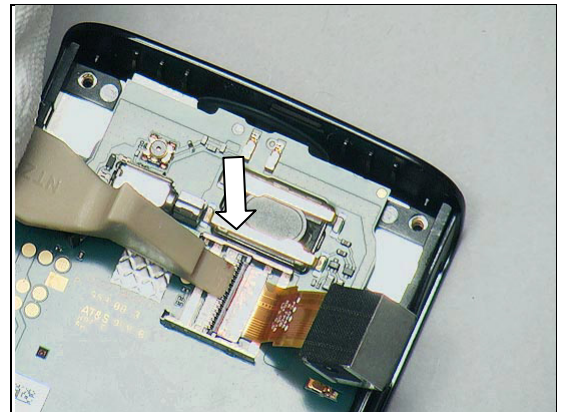
Replacement: Camera 5 MPixel

INSTALLATION

Insert the Camera 5 MPixel into the ZIF connector.

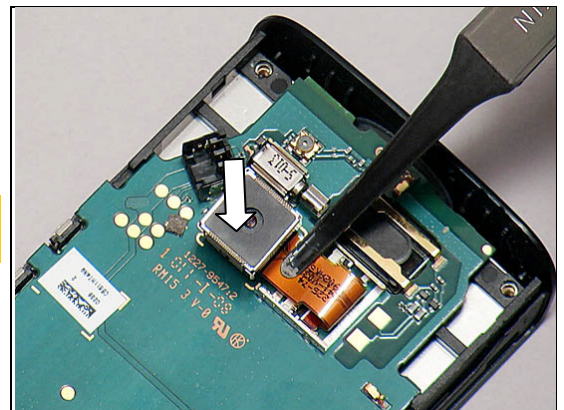


Close the ZIF connector with a Front Opening Tool.



Turn over the Camera 5 MPixel.

The flex film should be placed between the Shield Can Fence to avoid to damage the flex film.





Replacement

4.9 Cap RF

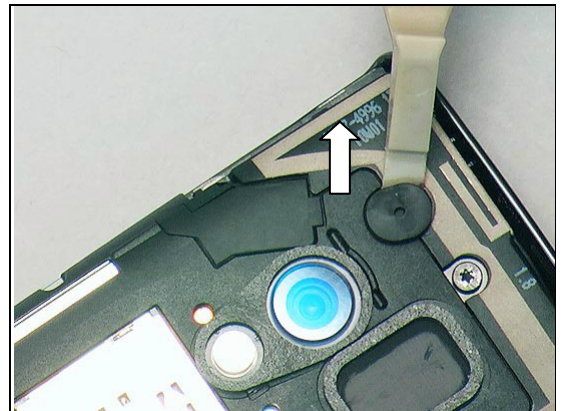
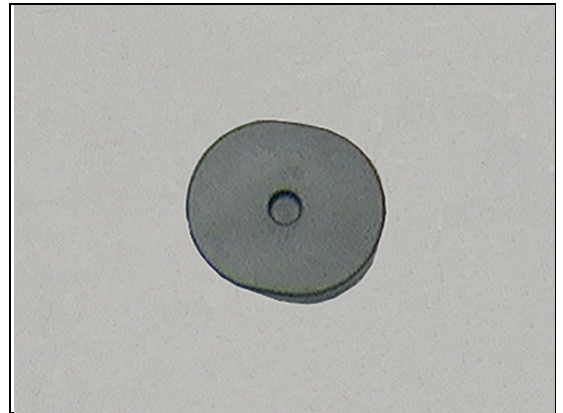
Follow the 3.1 Disassembly instructions!

Prepare the new Cap RF.

Follow the 5.6 Reassembly instructions!

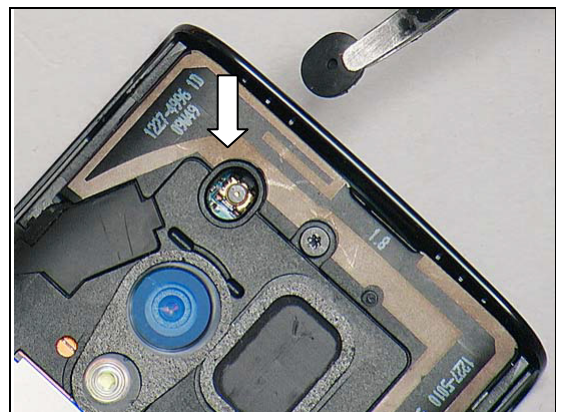
REMOVAL

Remove the Cap RF with a Front Opening Tool.



INSTALLATION

Mount a new Cap RF.



Press the Cap RF in place.





Replacement

4.10 Cap USB

Follow the 3.1 Disassembly instructions!

Prepare the new Cap USB.

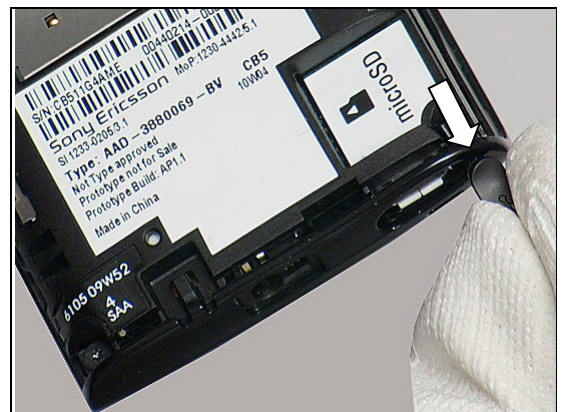
Follow the 5.6 Reassembly instructions!

REMOVAL

Open the Cap USB with a Front Opening Tool.

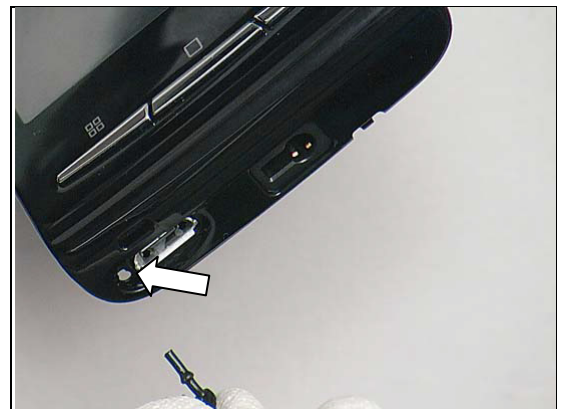


Pull the Cap USB out of the phone gently with your fingers.



INSTALLATION

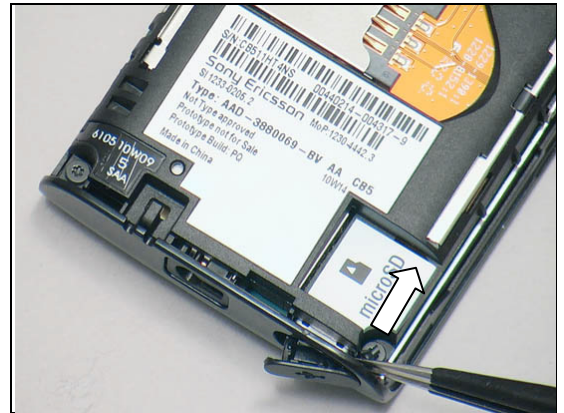
Insert the Cap USB into the cavity in the Cover Front.





Replacement: Cap USB

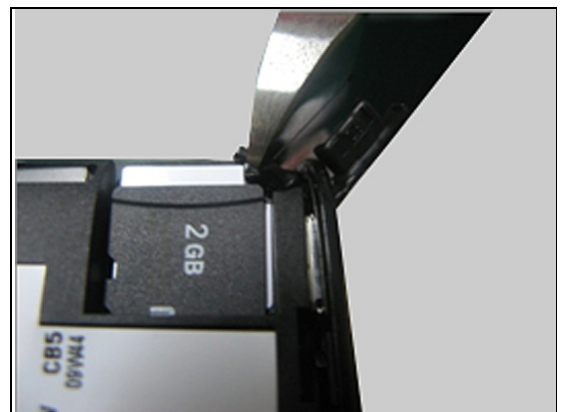
Pull the "Tail" of Cap USB to through the hole.



Press to snap it in place.



Cut the 'tail' of the USB Cap 1 mm after the bump with a pair of Pliers when you have mounted the USB Cap.



Replacement

4.11 Co-Brand

Follow the 3.1 Disassembly instructions!

Prepare the new Co-Brand.

Follow the 5.6 Reassembly instructions!

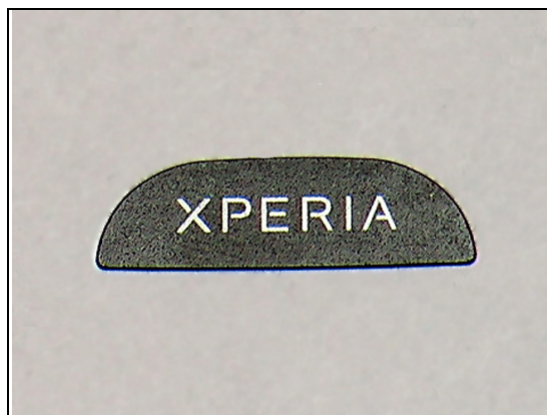
REMOVAL

Push from the hole on the back side of the Cover Back by using a pair of Tweezers.

Detach to remove the Co-Brand.

INSTALLATION

Mount a new Co-Brand.



Replacement: Co-Brand

Press to secure its attachment.



Replacement

4.12 Display 2.55 TFT

Follow the 3.1 – 3.6 Disassembly instructions!

Prepare the new Display 2.55 TFT.

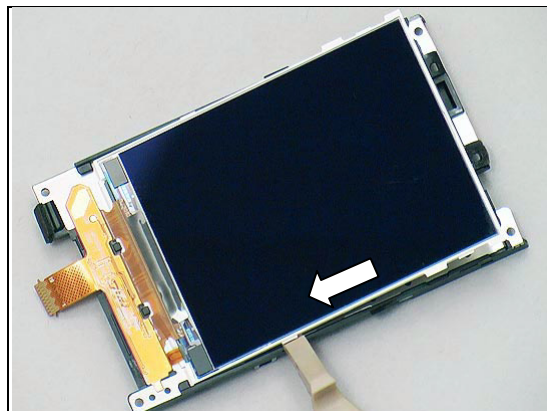
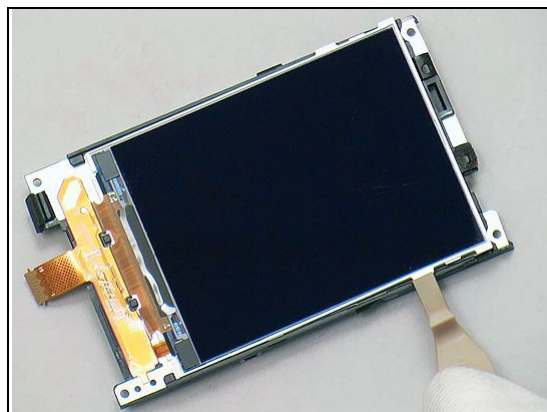
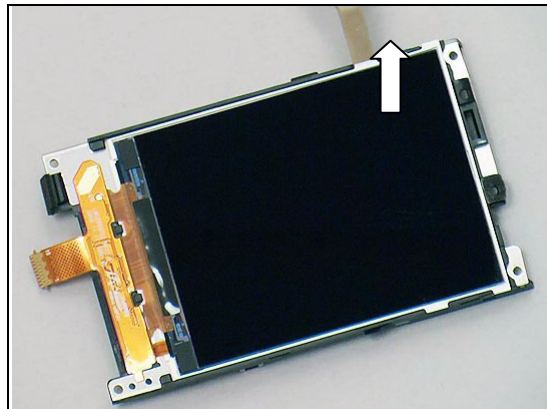
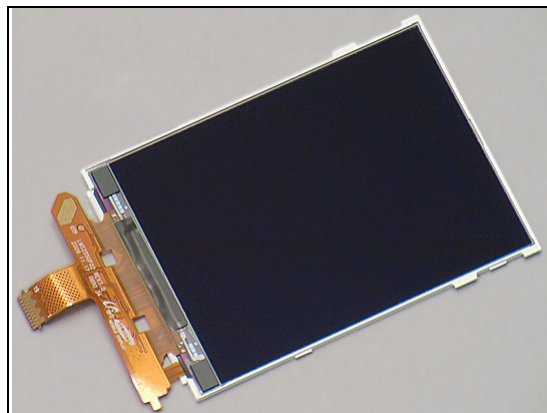
Follow the 5.1 – 5.6 Reassembly instructions!

REMOVAL

Release the Display 2.55 TFT with a Front Opening Tool.

Do the same on the opposite side.

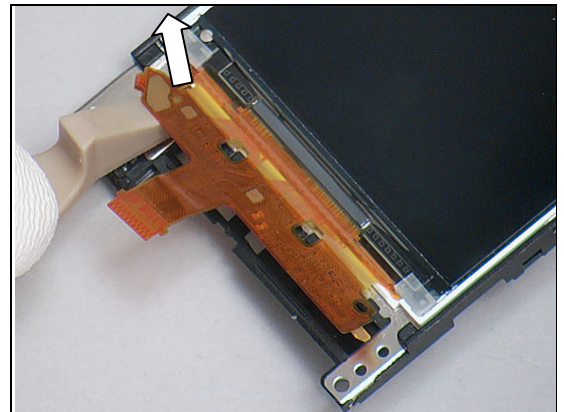
Slide along by the arrow.





Replacement: Display 2.55 TFT

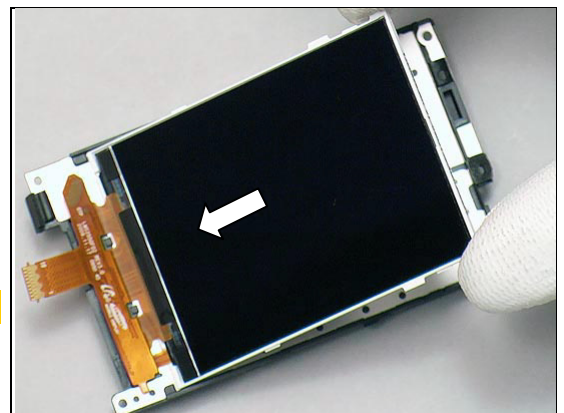
Peel off the Display 2.55 TFT by using a Front Opening Tool gently.



INSTALLATION

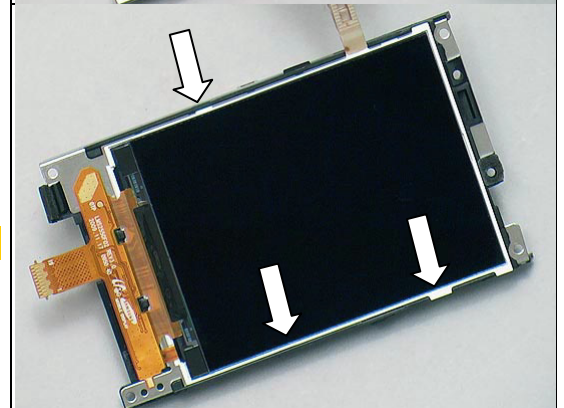
Place a new Display 2.55 TFT in place at approximately 30 degrees.

Do not touch the front of Display 2.55 TFT.



Snap the hooks gently with a Front Opening Tool to secure its position.

Do not touch the front of Display 2.55 TFT.





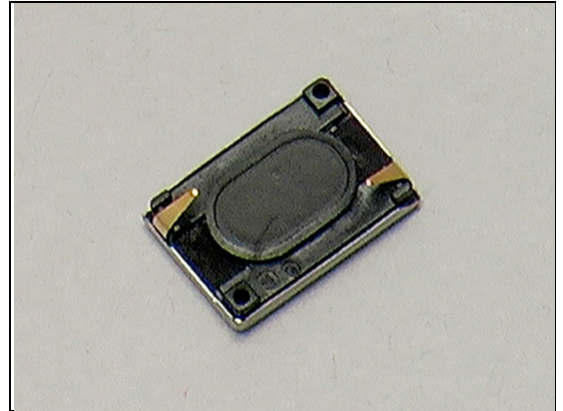
Replacement

4.13 Ear speaker & Adhesive Earspeaker

Follow the 3.1 – 3.6 Disassembly instructions!

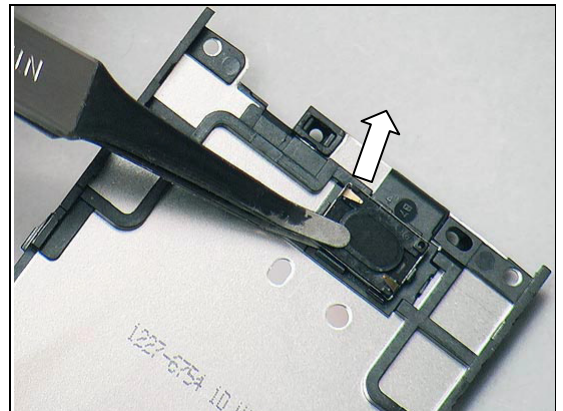
Prepare the new Ear Speaker & Adhesive Earspeaker.

Follow the 5.1 – 5.6 Reassembly instructions!



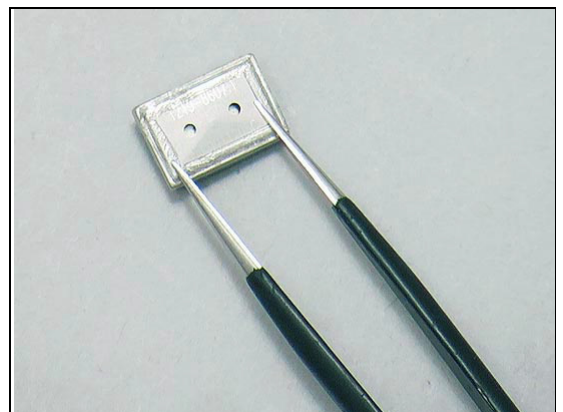
REMOVAL

Detach the Ear Speaker by using a Flex Film Assembly Tool from the left-bottom corner.

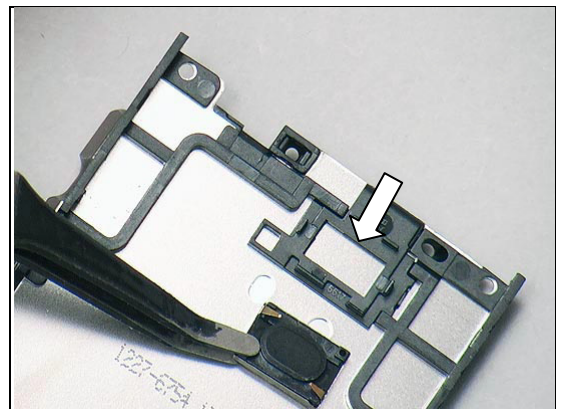


INSTALLATION

Mount the new Adhesive Ear Speaker in its proper position and press to make sure it is securely attached.

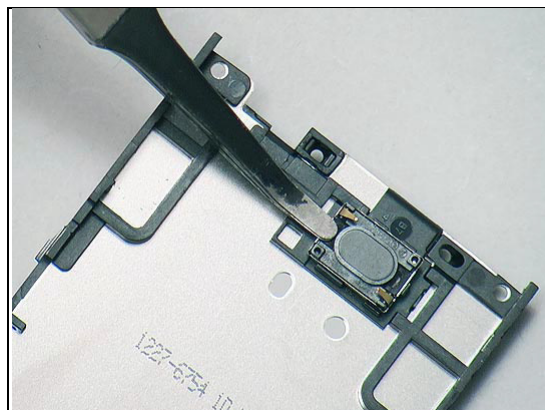


Mount a new Ear Speaker.



Replacement: Ear Speaker & Adhesive Earspeaker

Press to ensure its attachment.





Replacement

4.14 Foil Grounding Camera

Follow the 3.1 – 3.4 Disassembly instructions!

Follow the 4.8 Removal instructions!

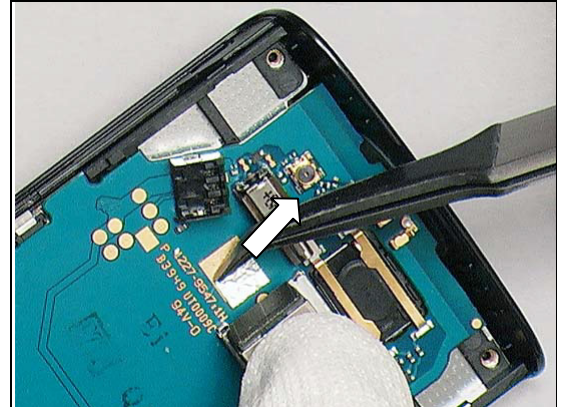
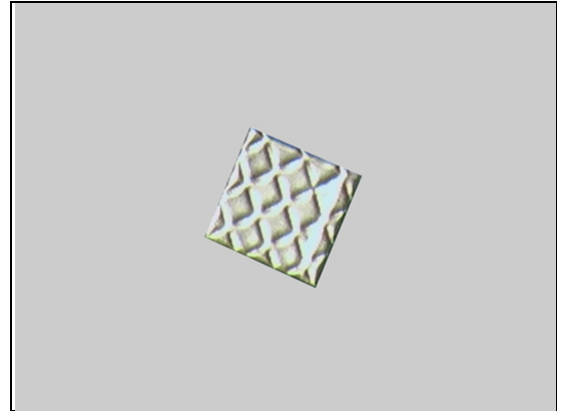
Prepare the new Foil Grounding Camera.

Follow the 4.8 Installation instructions!

Follow the 5.3 – 5.6 Reassembly instructions!

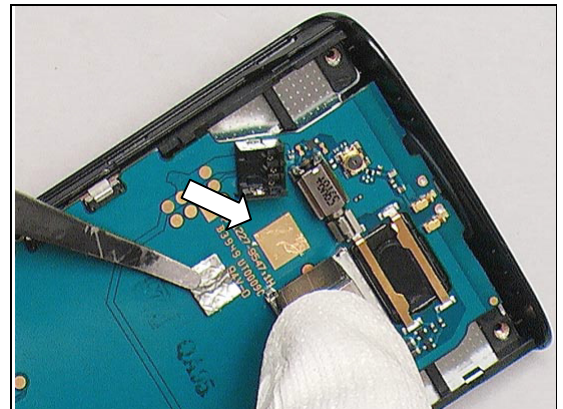
REMOVAL

Detach the Foil Grounding Camera by using a Flex Film Assembly Tool.

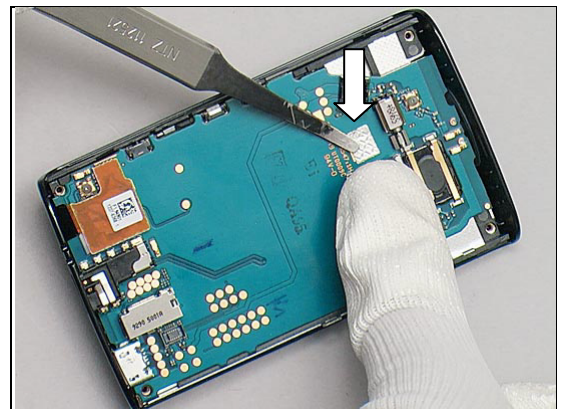


INSTALLATION

Mount a new Foil.



Press to secure its attachment.



Replacement

4.15 Foil Insulation

Follow the 3.1 – 3.4 Disassembly instructions!

Prepare the new Foil Insulation.

Follow the 5.3 – 5.6 Reassembly instructions!

REMOVAL

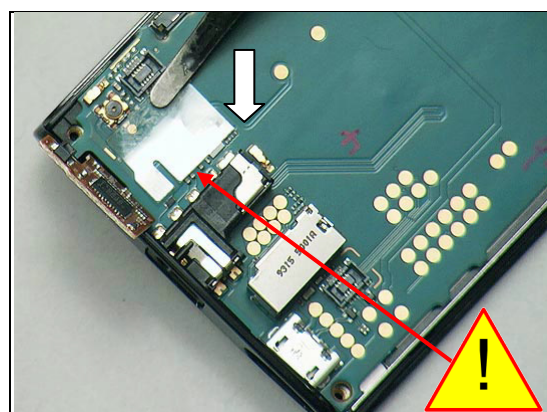
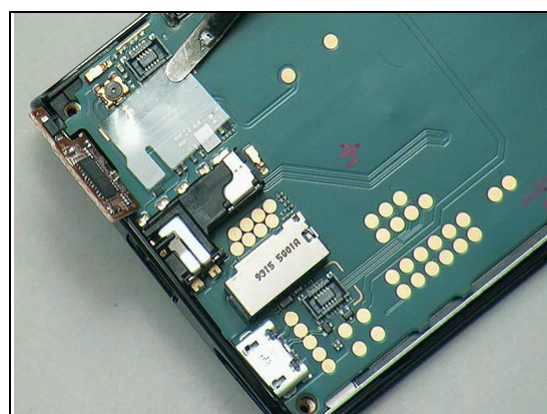
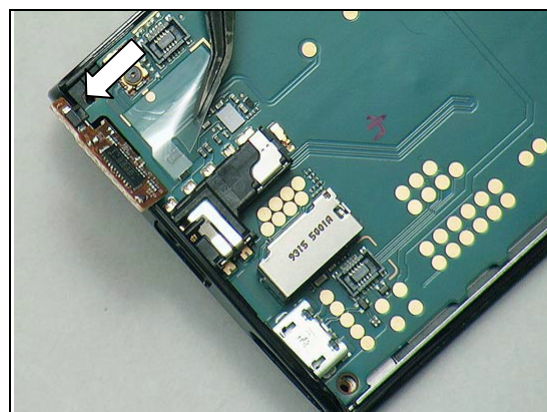
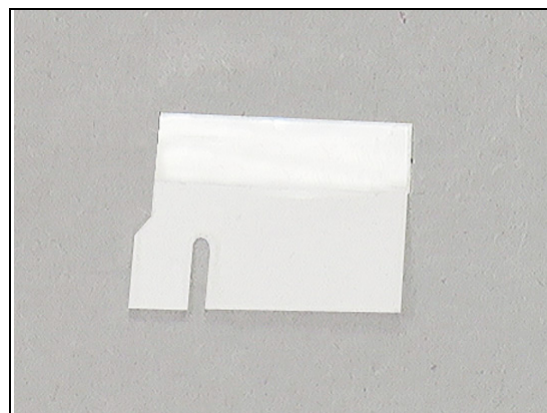
Detach it by using a Flex Film Assembly Tool.

INSTALLATION

Mount a new Foil Insulation.

Press to secure its attachment.

Do not press the components under the Foil Insulation.





Replacement

4.16 Gasket Camera

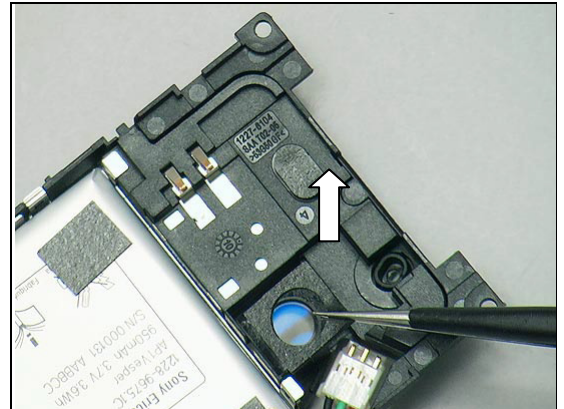
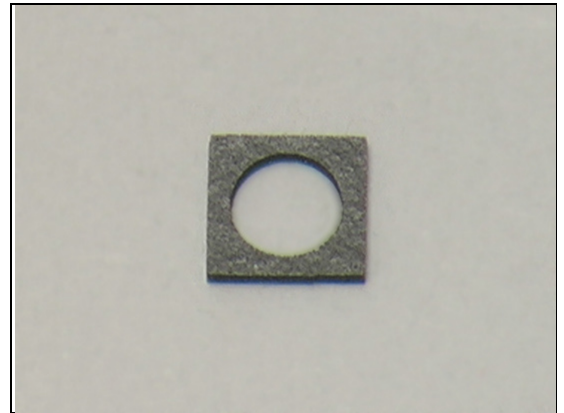
Follow the 3.1 – 3.4 Disassembly instructions!

Prepare the new Gasket Camera.

Follow the 5.3 – 5.6 Reassembly instructions!

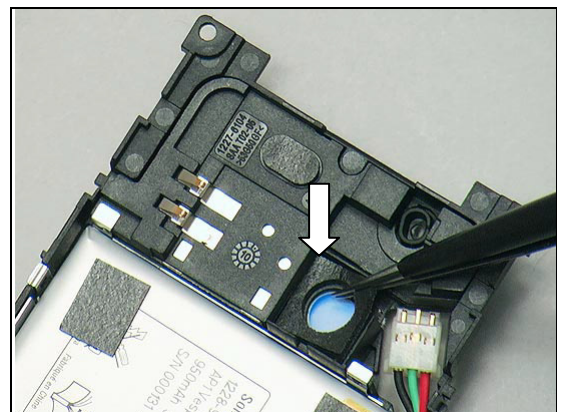
REMOVAL

Detach it by using a pair of Tweezers from the upper-right corner at the back side of the Inner Frame .

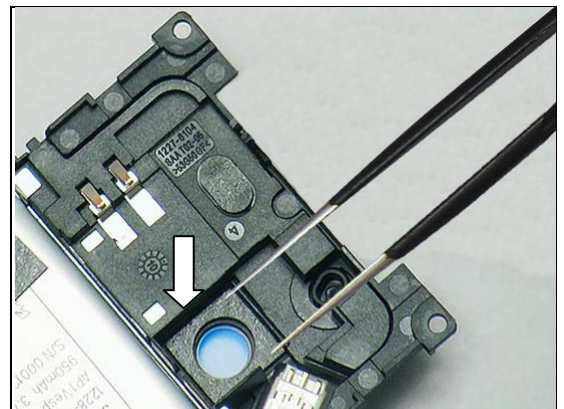


INSTALLATION

Mount a new Gasket Camera.



Press to secure its attachment.





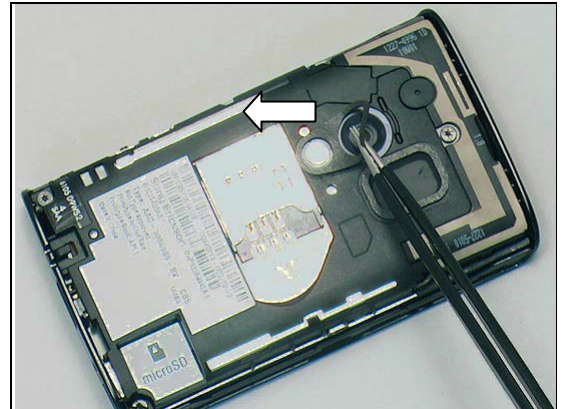
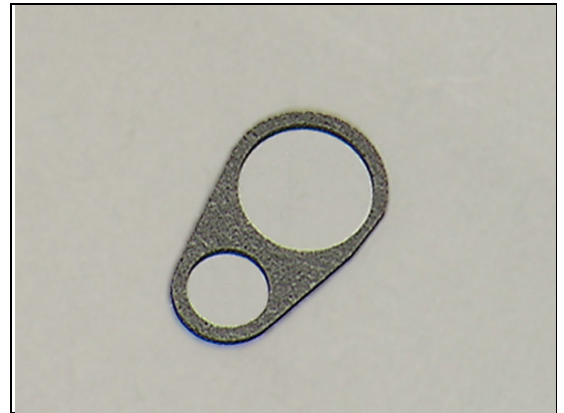
Replacement

4.17 Gasket Camera/Flash

Follow the 3.1 Disassembly instructions!
Prepare the new Gasket Camera/Flash.
Follow the 5.6 Reassembly instructions!

REMOVAL

Detach it by using a pair of Tweezers.

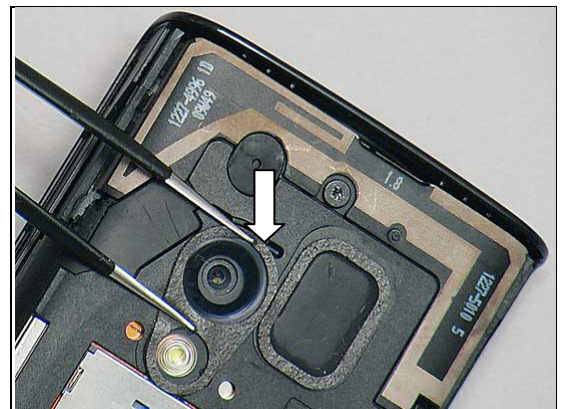


INSTALLATION

Mount a new Gasket Camera/Flash.



Press to secure its attachment.



Replacement

4.18 Gasket Conductive 2,0x2,0

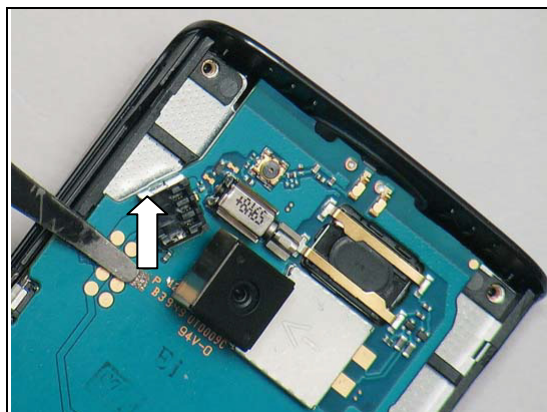
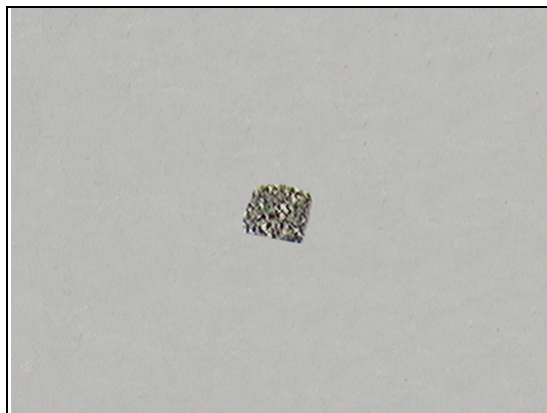
Follow the 3.1 – 3.4 Disassembly instructions!

Prepare the new Gasket Conductive 2,0x2,0.

Follow the 5.3 – 5.6 Reassembly instructions!

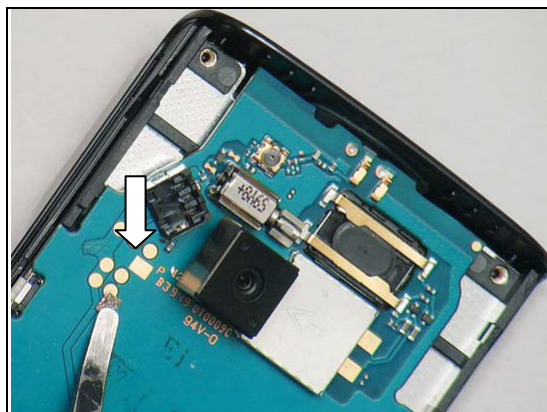
REMOVAL

Detach it by using a pair of Tweezers.

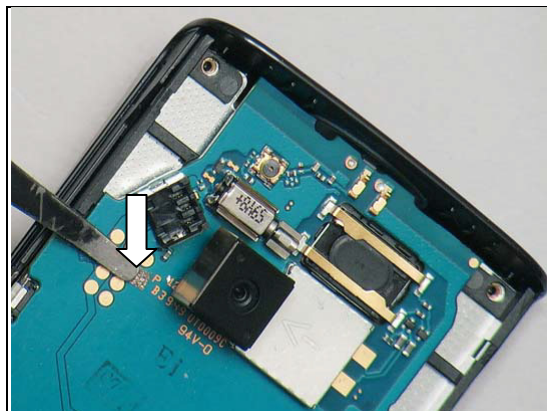


INSTALLATION

Mount a new Gasket Conductive 2,0x2,0.



Press to secure its attachment.





Replacement

4.19 Gasket Conductive 3,1x2,0

Follow the 3.1 – 3.5 Disassembly instructions!
Prepare the new Gasket Conductive 3,1x2,0.
Follow the 5.2 – 5.6 Reassembly instructions!

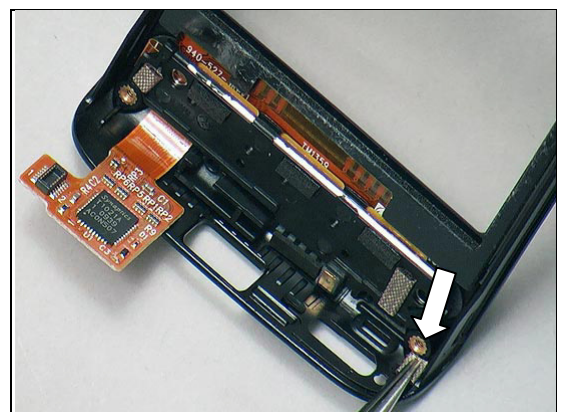
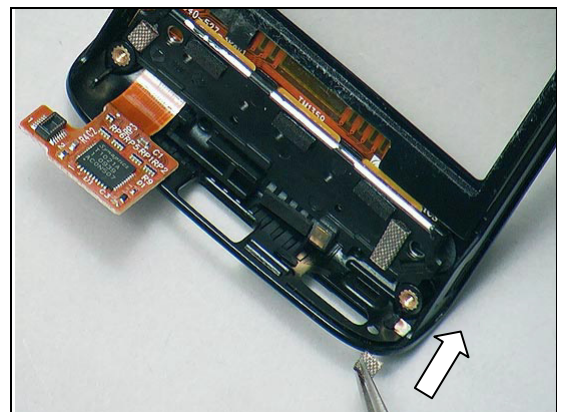
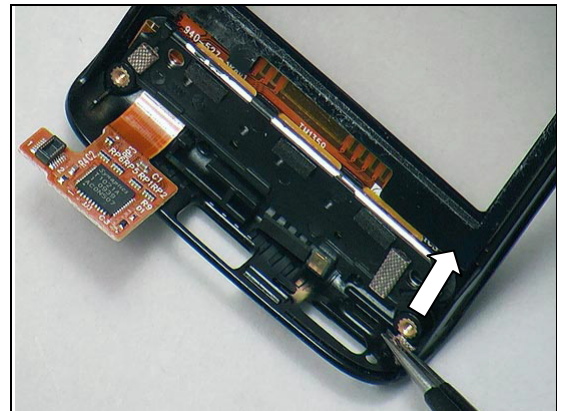
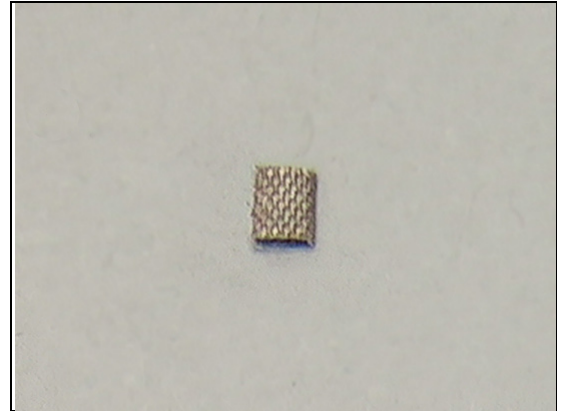
REMOVAL

Detach it by using a pair of Tweezers from the inside of the Cover Front.

INSTALLATION

Mount a new gasket.

Press to secure its attachment.





Replacement

4.20 Gasket Conductive 3,8x2,3

Follow the 3.1 – 3.6 Disassembly instructions!

Prepare the new Gasket Conductive 3,8x2,3

Follow the 5.1 – 5.6 Reassembly instructions!

Note!

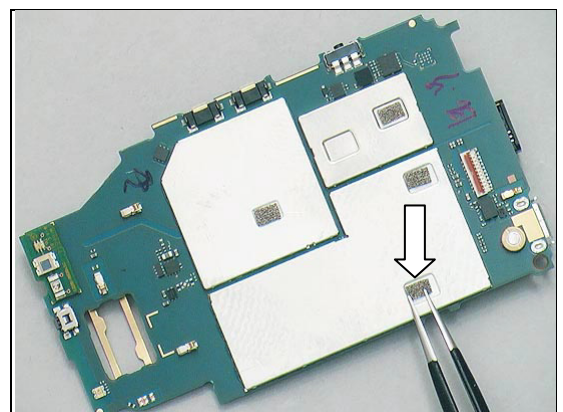
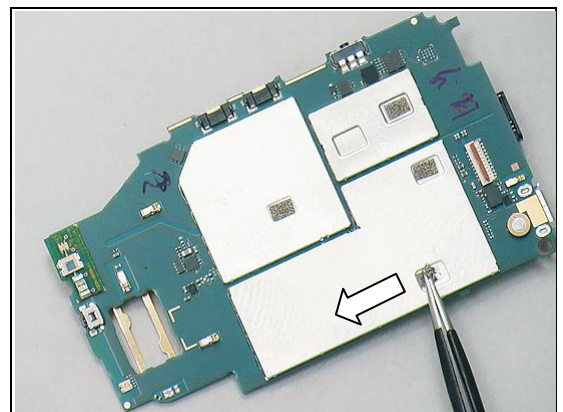
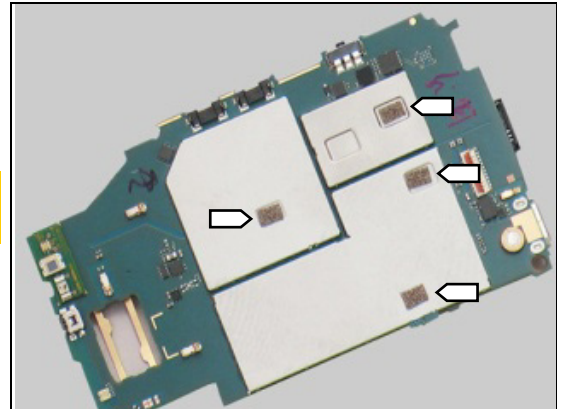
There are 4 Gasket Conductive 3,8x2,3 in each unit.

REMOVAL

Detach it by using a pair of Tweezers.

INSTALLATION

Mount a new gasket. Press to secure its attachment.





Replacement

4.21 Gasket Conductive 5,6x1,9

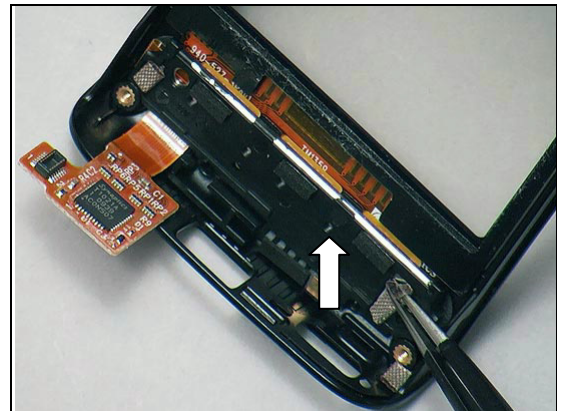
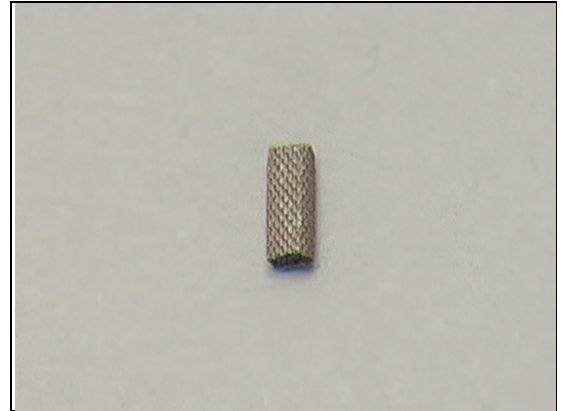
Follow the 3.1 – 3.5 Disassembly instructions!

Prepare the new Gasket Conductive 5,6x1,9

Follow the 5.2 – 5.6 Reassembly instructions!

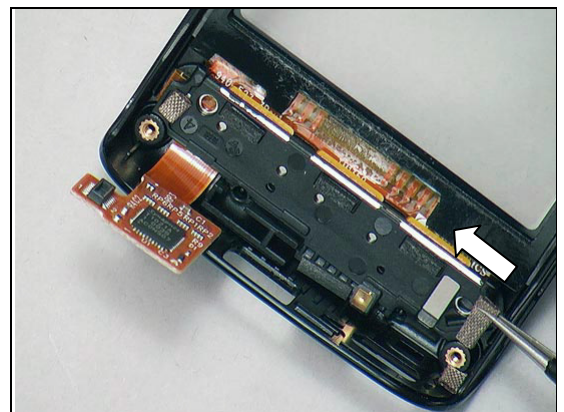
REMOVAL

Detach it by using a pair of Tweezers.

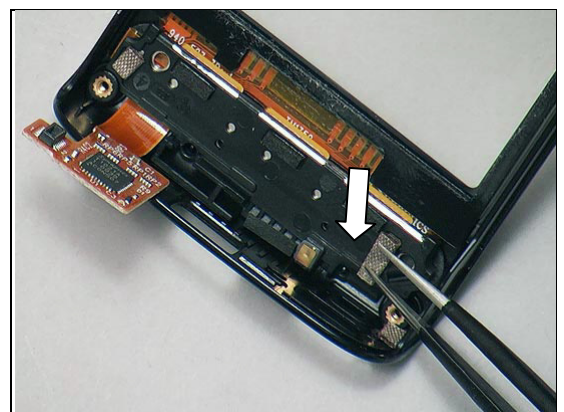


INSTALLATION

Mount a new gasket.



Press to secure its attachment.





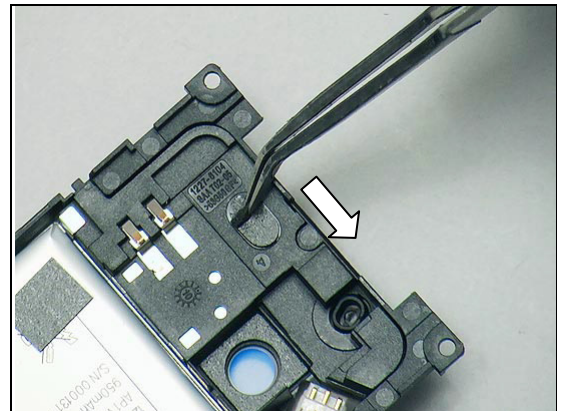
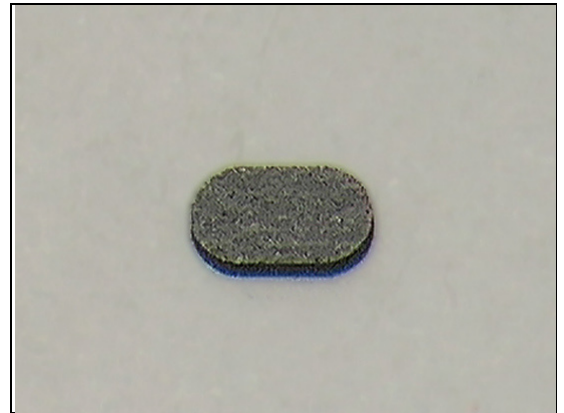
Replacement

4.22 Gasket Earspeaker

Follow the 3.1 – 3.4 Disassembly instructions!
Prepare the new Gasket Earspeaker.
Follow the 5.3 – 5.6 Reassembly instructions!

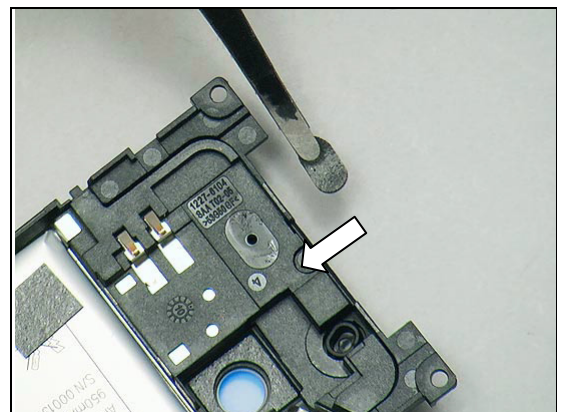
REMOVAL

Detach it by using a Flex Film Assembly Tool.

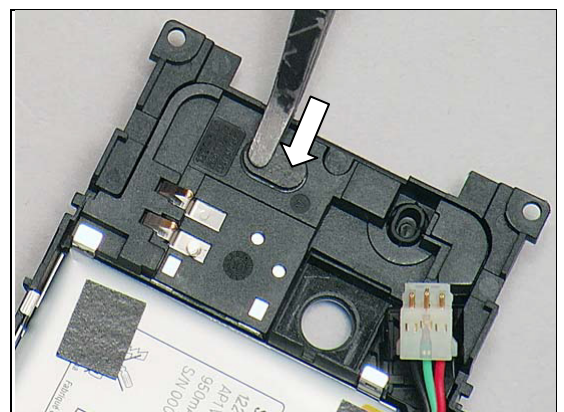


INSTALLATION

Mount a new Gasket Earspeaker.



Press to secure its attachment.





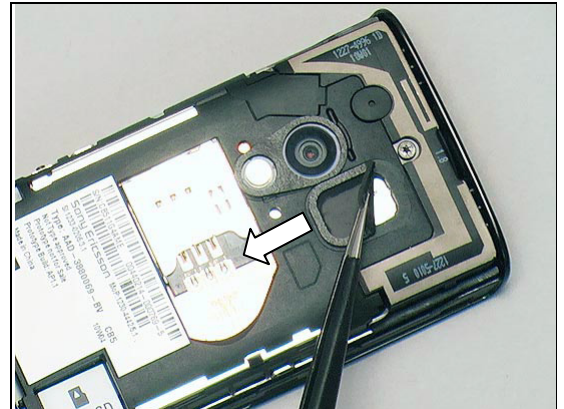
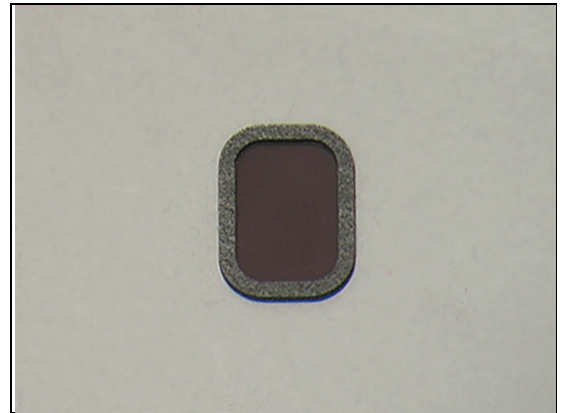
Replacement

4.23 Gasket Loudspeaker

Follow the 3.1 Disassembly instructions!
Prepare the new Gasket Loudspeaker.
Follow the 5.6 Reassembly instructions!

REMOVAL

Detach it by using a pair of Tweezers.



INSTALLATION

Mount a new Gasket Loudspeaker.



Press to secure its attachment.



Replacement

4.24 Gasket Mic

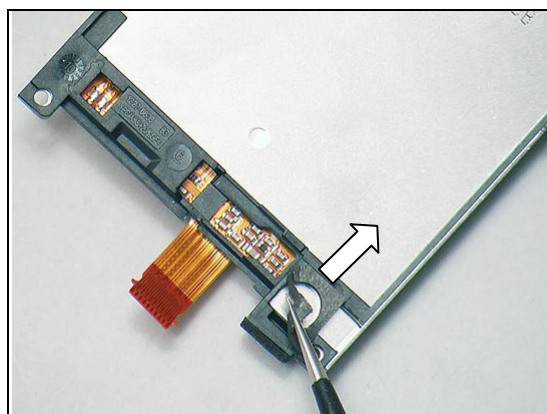
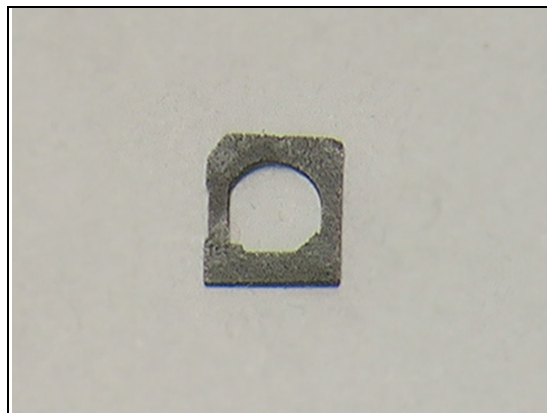
Follow the 3.1 – 3.6 Disassembly instructions!

Prepare the new Gasket Mic.

Follow the 5.1 – 5.6 Reassembly instructions!

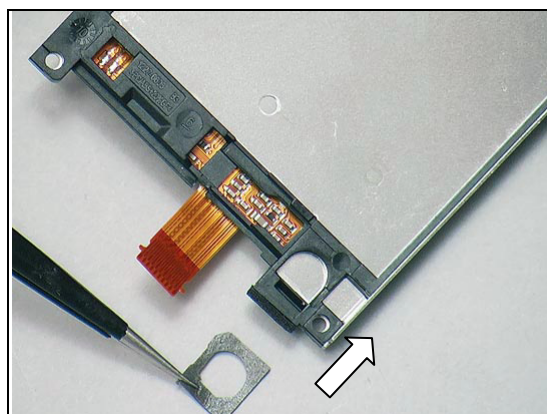
REMOVAL

Detach it by using a pair of Tweezers.

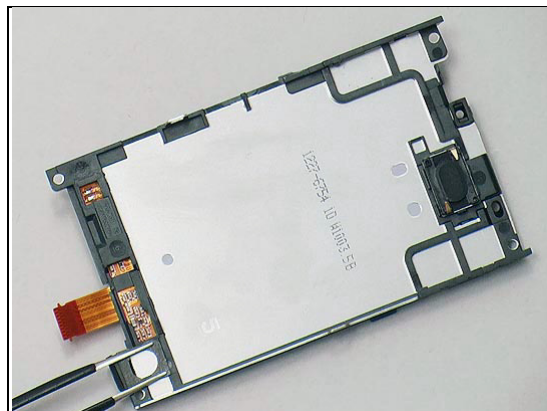


INSTALLATION

Mount a new Gasket Mic.



Press to secure its attachment.





Replacement

4.25 Gasket Mic Channel

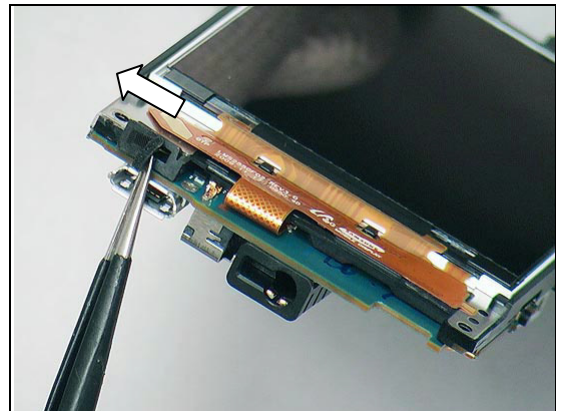
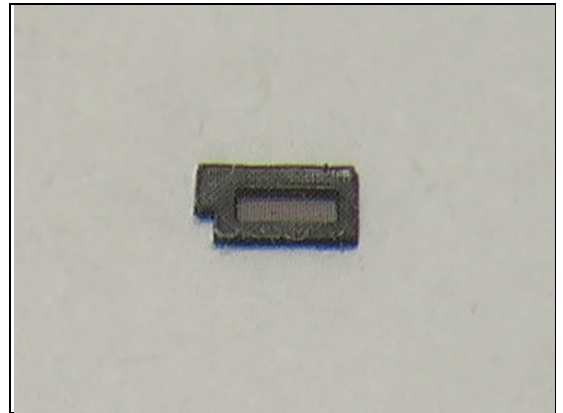
Follow the 3.1 – 3.5 Disassembly instructions!

Prepare the new Gasket Mic Channel.

Follow the 5.2 – 5.6 Reassembly instructions!

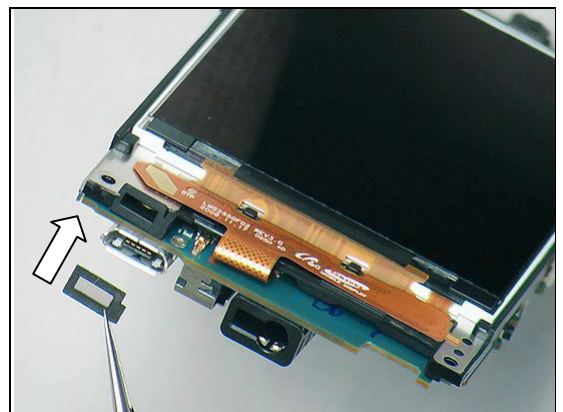
REMOVAL

Detach it by using a pair of Tweezers.

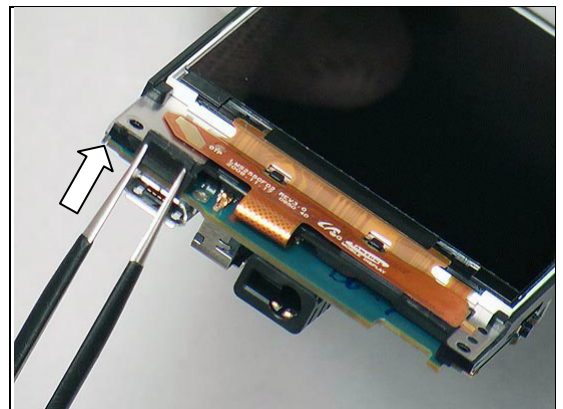


INSTALLATION

Mount a new Gasket Mic Channel.



Press to secure its attachment.



Replacement

4.26 Gasket SIM FPC

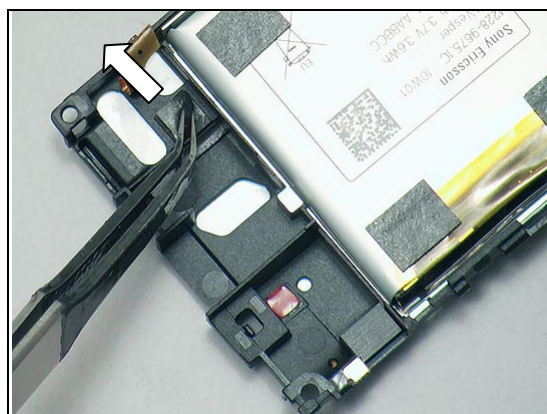
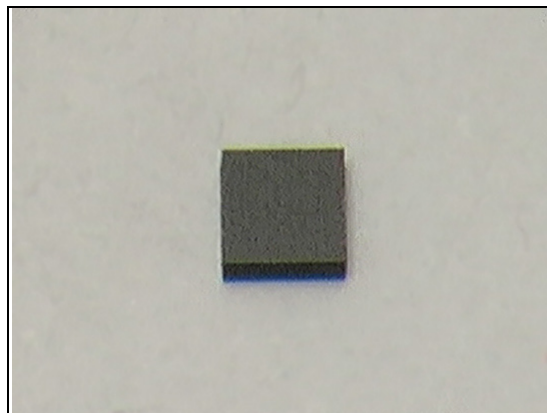
Follow the 3.1 – 3.4 Disassembly instructions!

Prepare the new Gasket SIM FPC.

Follow the 5.3 – 5.6 Reassembly instructions!

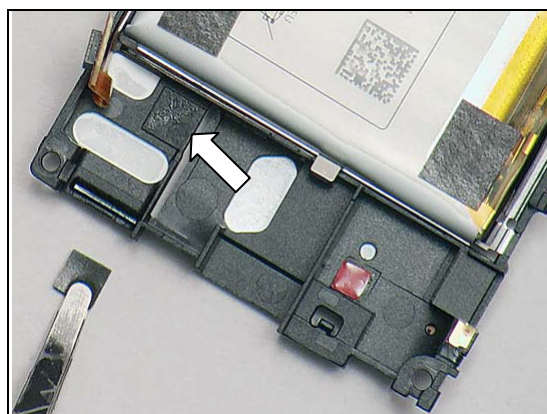
REMOVAL

Detach it by using a Flex Film Assembly Tool.

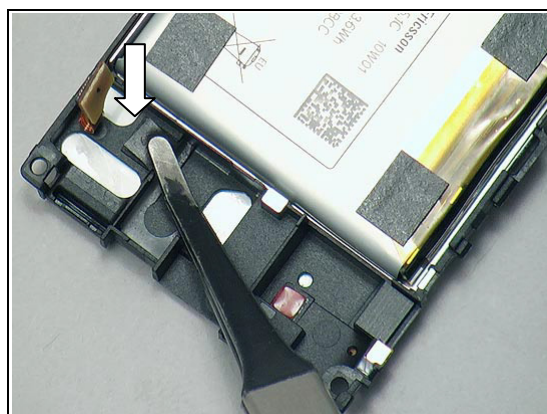


INSTALLATION

Mount a new Gasket SIM FPC.



Press to secure its attachment.



Replacement

4.27 Gasket Touch FPC

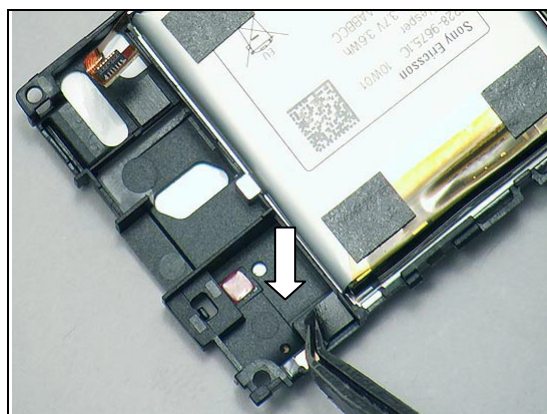
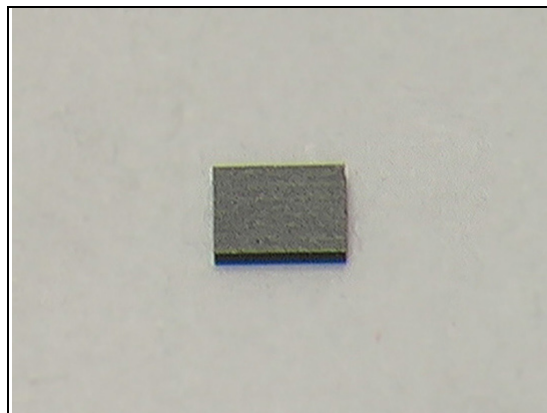
Follow the 3.1 – 3.4 Disassembly instructions!

Prepare the new Gasket Touch FPC.

Follow the 5.3 – 5.6 Reassembly instructions!

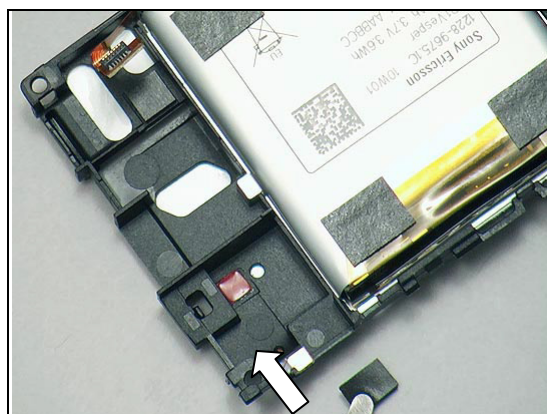
REMOVAL

Detach it by using a Flex Film Assembly Tool.

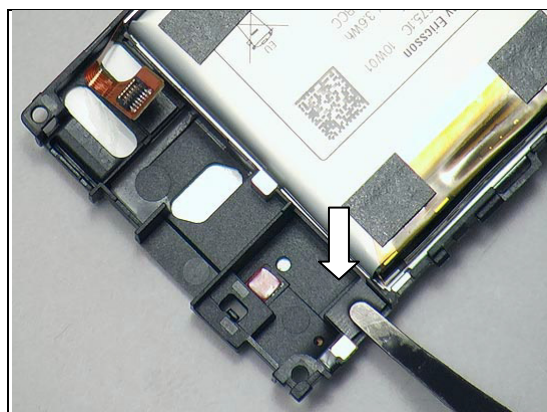


INSTALLATION

Mount a new Gasket Touch FPC.



Press to secure its attachment.





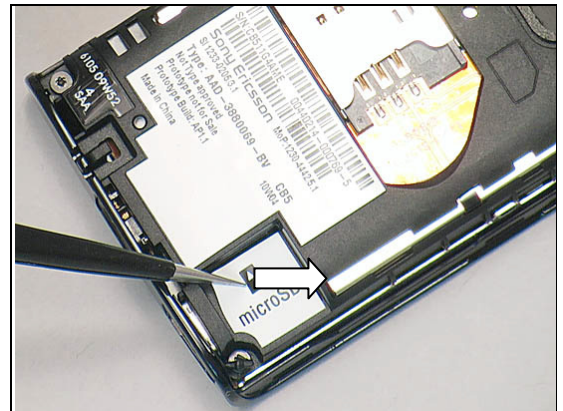
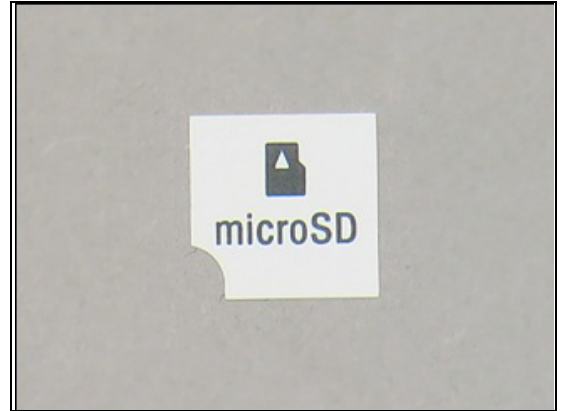
Replacement

4.28 Label MicroSD

Follow the 3.1 Disassembly instructions!
Prepare the new Label MicroSD.
Follow the 5.6 Reassembly instructions!

REMOVAL

Remove the label by using a pair of Tweezers.

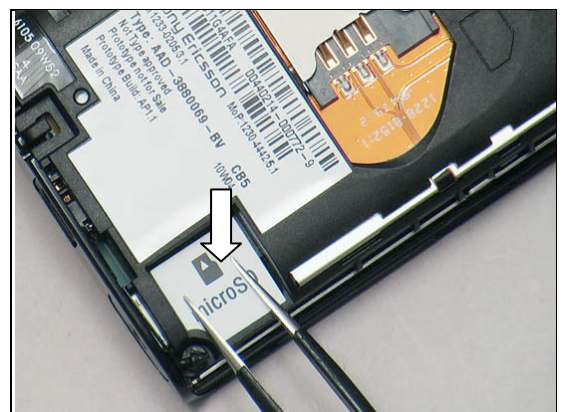


INSTALLATION

Mount the new Label MicroSD in the Inner Frame.



Press to secure its attachment.





Replacement

4.29 Label Mobile Phone

Follow the 3.1 Disassembly instructions!

Prepare the new Label Mobile Phone.

Follow the 5.6 Reassembly instructions!

REMOVAL

Read the old Label Mobile Phone and write the information into the 'LabelMake' program before removal.

Carefully remove the Label by using a Flex Film Assembly Tool.

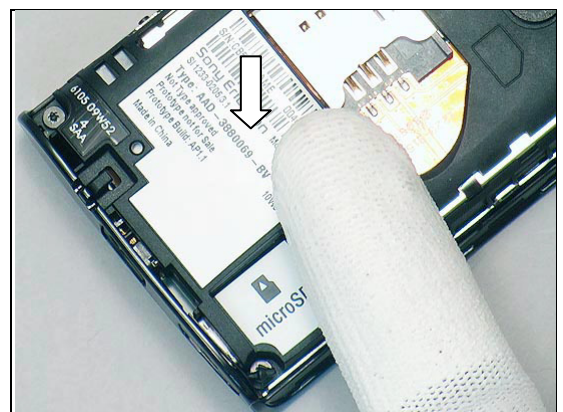
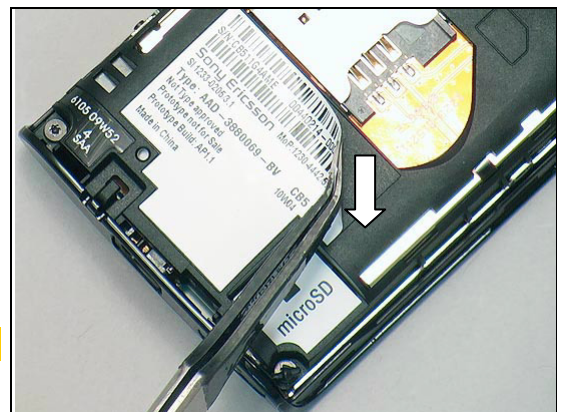
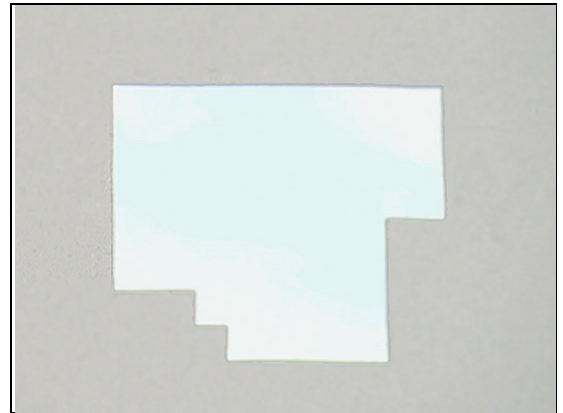
INSTALLATION

Check that the proper label format is loaded in the Zebra printer and write a new Label by using the 'LabelMake' software.

Mount the new Label Mobile Phone inside the frame.

Only one label is allowed!

Press with a finger to secure its attachment.



Replacement

4.30 Mesh Back Cover

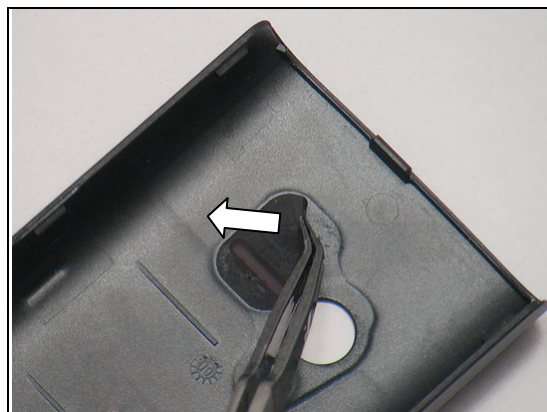
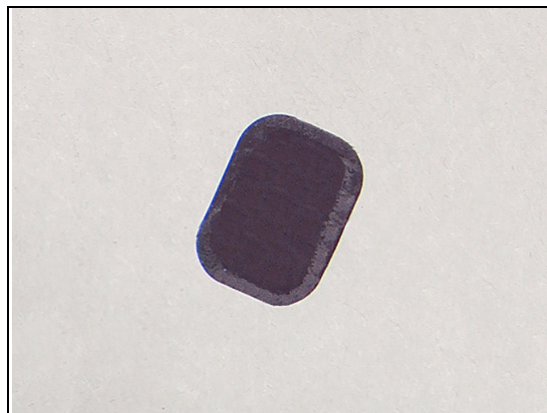
Follow the 3.1 Disassembly instructions!

Prepare the new Mesh Back Cover.

Follow the 5.6 Reassembly instructions!

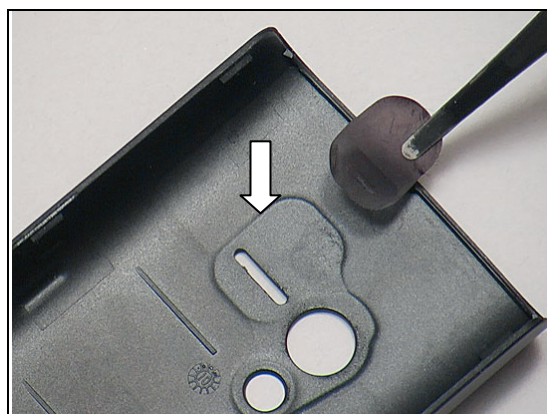
REMOVAL

Peel off the mesh with a Flex Film Assembly Tool.

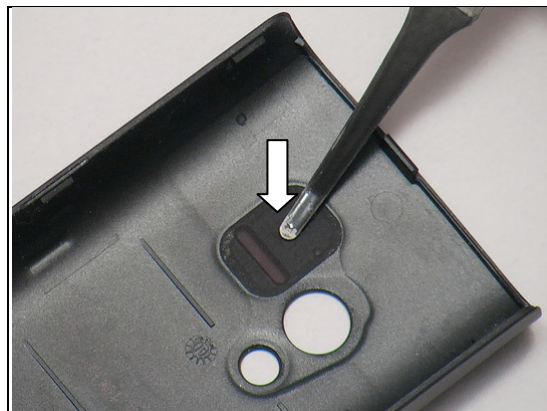


INSTALLATION

Mount the new Mesh Back Cover.



Press to secure its attachment.





Replacement

4.31 Shield Can Lid BB

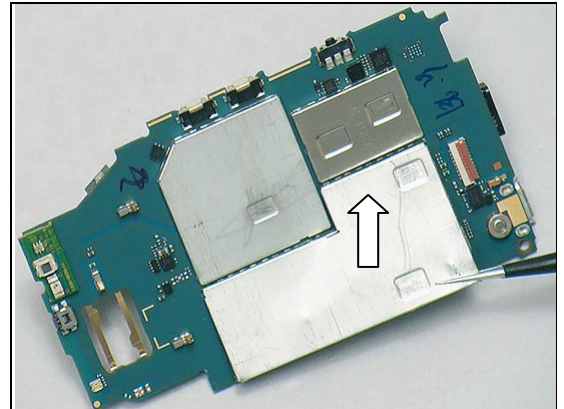
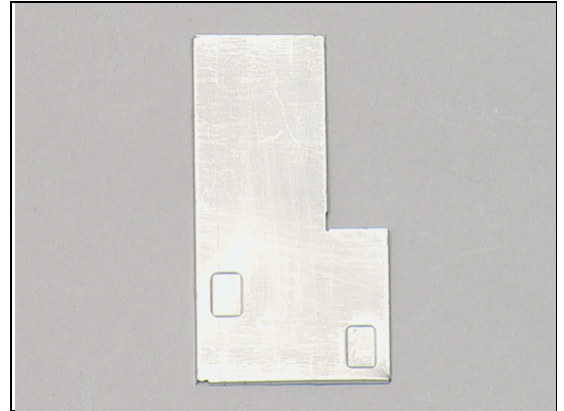
Follow the 3.1 – 3.6 Disassembly instructions!

Prepare the new Shield Can Lid BB.

Follow the 5.1 – 5.6 Reassembly instructions!

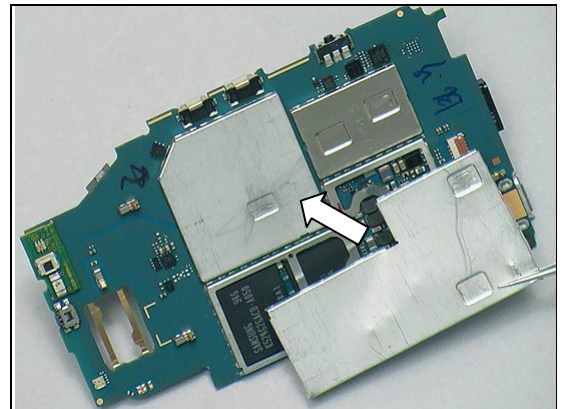
REMOVAL

Unsnap the corners of the Shield Can Lid BB with a pair of Tweezers and remove it.



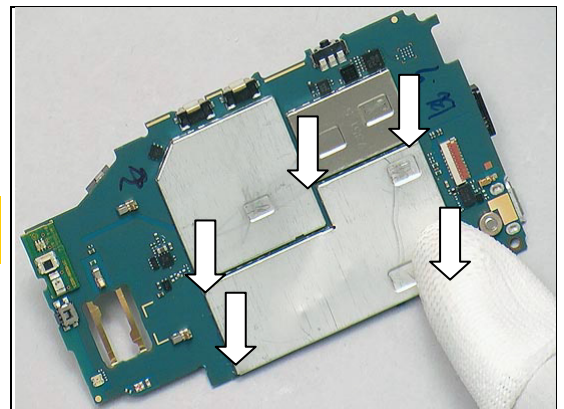
INSTALLATION

Mount a new Shield Can Lid BB.



Press to snap it.

**Press only on the edges of the Shield Can Lid.
Not in the middle of the Shield Can Lid.**





Replacement

4.32 Shield Can Lid Camera

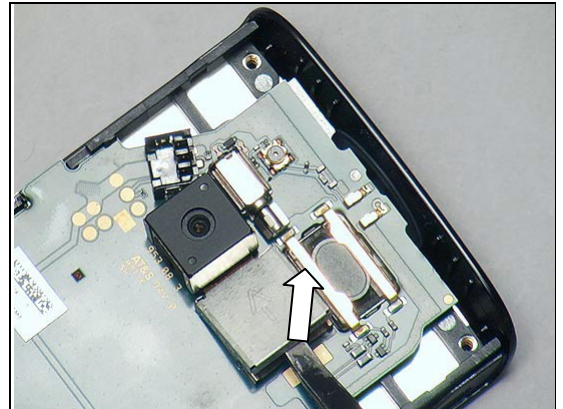
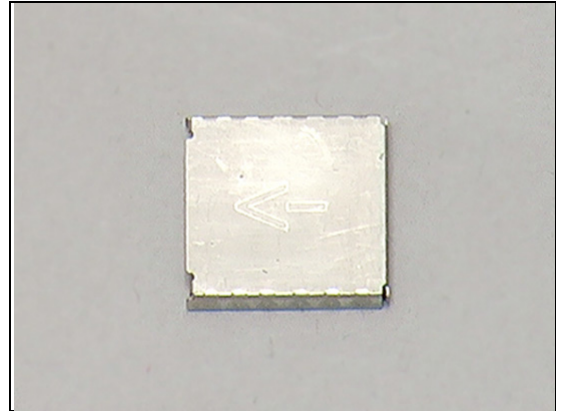
Follow the 3.1 – 3.5 Disassembly instructions!

Prepare the new Shield Can Lid Camera.

Follow the 5.2 – 5.6 Reassembly instructions!

REMOVAL

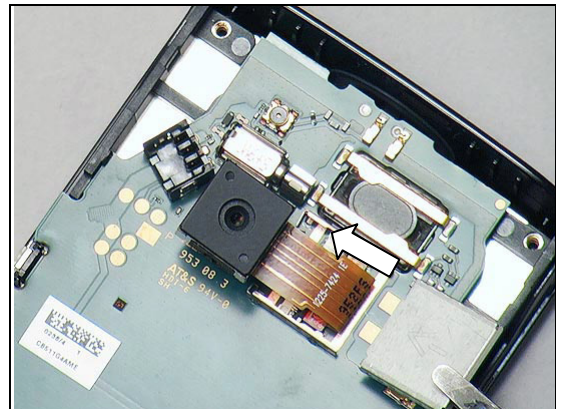
Unsnap the Shield Can Lid Camera with a Flex Film Assembly Tool and remove it.



INSTALLATION

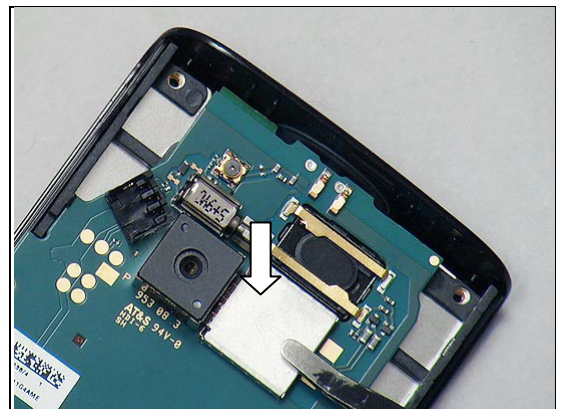
Mount a new Shield Can Lid Camera.

There is an arrow on the lid that shall point at the camera!



Press to snap it.

***Press only on the edges of the Shield Can Lid.
Not in the middle of the Shield Can Lid.***



Replacement

4.33 Shield Can Lid Radio

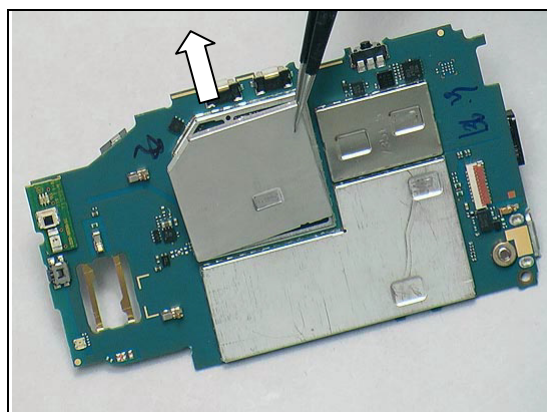
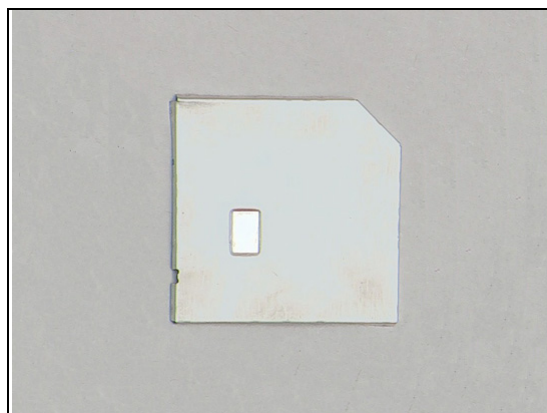
Follow the 3.1 – 3.6 Disassembly instructions!

Prepare the new Shield Can Lid Radio.

Follow the 5.1 – 5.6 Reassembly instructions!

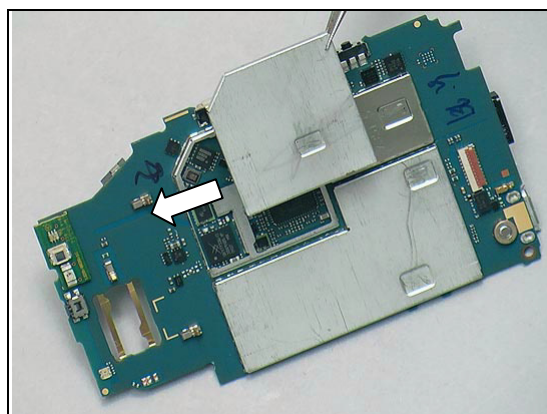
REMOVAL

Unsnap the corners of the Shield Can Lid Radio with a pair of Tweezers and remove it.



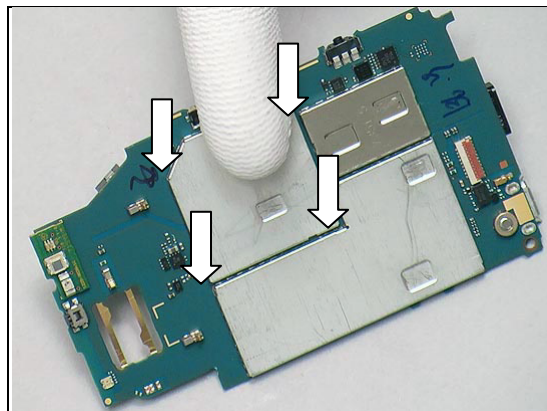
INSTALLATION

Mount a new Shield Can Lid Radio.



Press to snap it.

**Press only on the edges of the Shield Can Lid.
Not in the middle of the Shield Can Lid.**





Replacement

4.34 Shield Can Lid WLAN

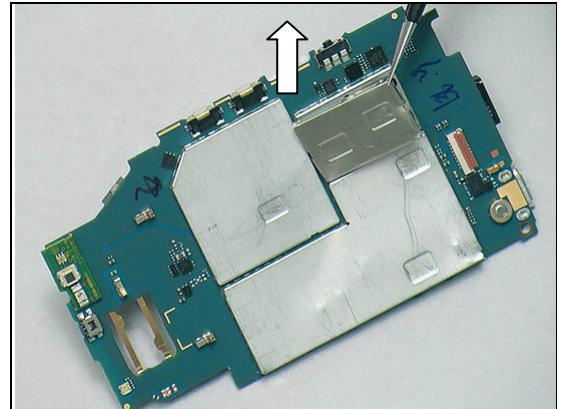
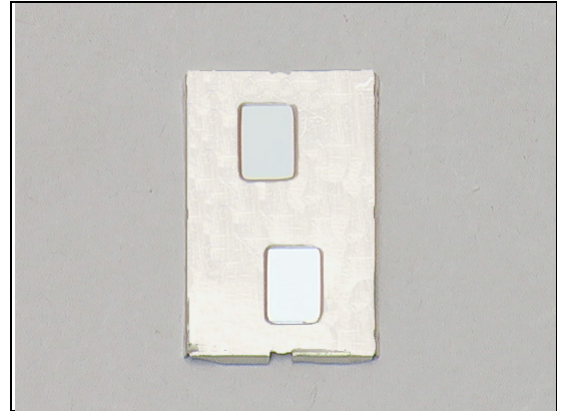
Follow the 3.1 – 3.6 Disassembly instructions!

Prepare the new Shield Can Lid WLAN.

Follow the 5.1 – 5.6 Reassembly instructions!

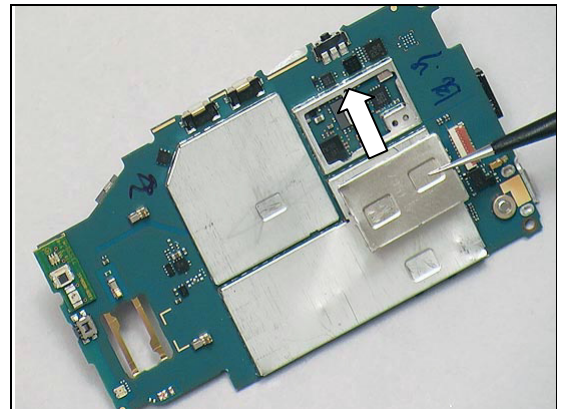
REMOVAL

Unsnap the corners of the Shield Can Lid WLAN with a pair of Tweezers and remove it.



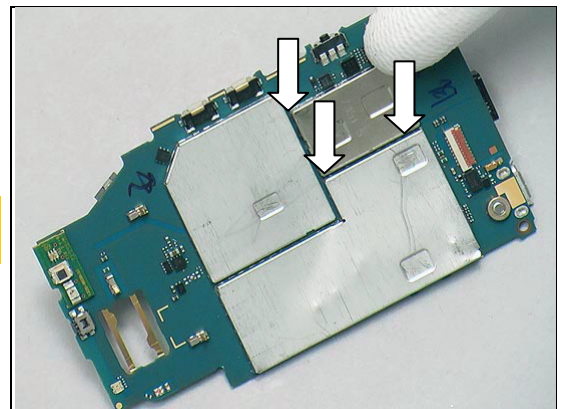
INSTALLATION

Mount a new Shield Can Lid Radio.



Press to snap it.

**Press only on the edges of the Shield Can Lid.
Not in the middle of the Shield Can Lid.**





Replacement

4.35 SIM FPC & Adhesive SIM FPC

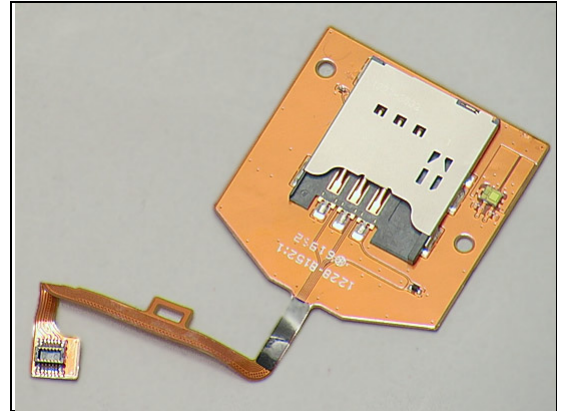
Follow the 3.1 – 3.4 Disassembly instructions!

Follow the 4.7 Removal instructions!

Prepare the new SIM FPC & Adhesive SIM FPC.

Follow the 4.7 Installation instructions!

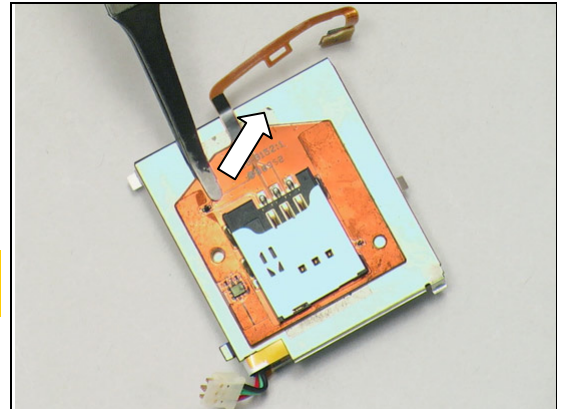
Follow the 5.3 – 5.6 Reassembly instructions!



REMOVAL

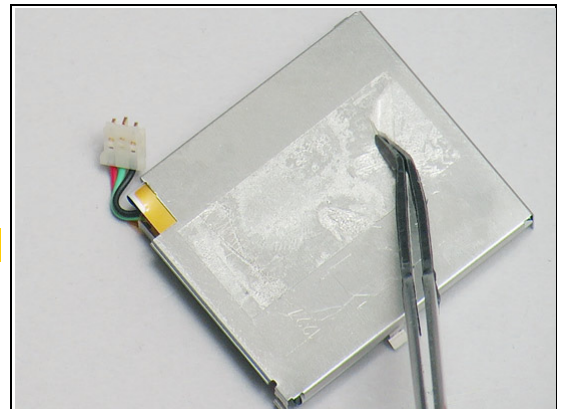
Detach the SIM FPC from the Battery Assy with a Flex Film Assembly Tool.

Scrap! The SIM FPC shall not be reused when it has been removed from the Battery Assy!



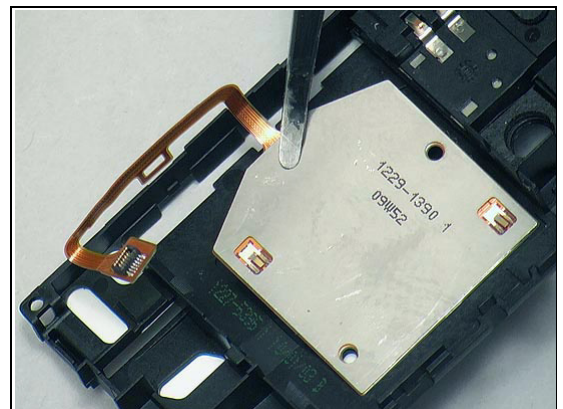
Peer off the Adhesive SIM FPC by using a Flex Film Assembly Tool.

Scrap! The Adhesive SIM FPC shall not be reuse!



INSTALLATION

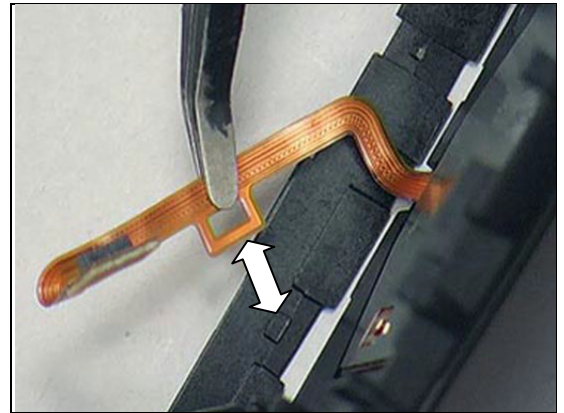
Place a new SIM FPC in the groove of the Inner Frame.



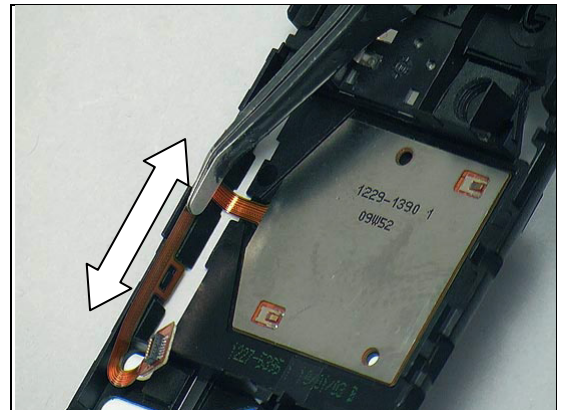


Replacement: SIM FPC & Adhesive SIM FPC

Align the SIM FPC in the guiding pole.



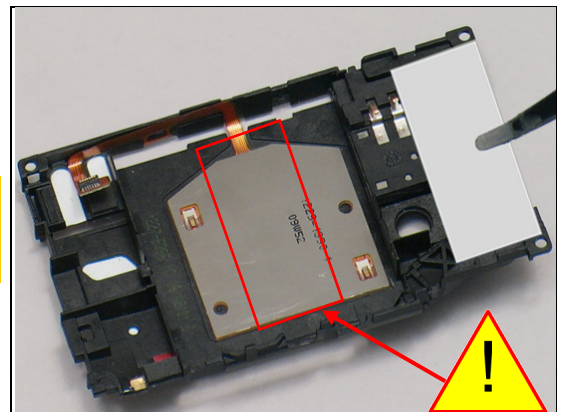
Press the SIM FPC along the Inner Frame over the groove channel with a Flex Film Assembly Tool.



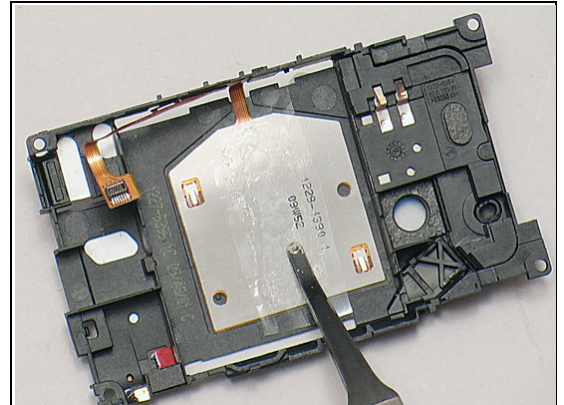
Mount a new Adhesive SIM FPC.

Make sure that the new Adhesive SIM FPC is placed in the center as red area shown.

Do not cover the grounding springs.



Press to secure the attachment.





Replacement

4.36 Tape Water Ingress

INSPECTION

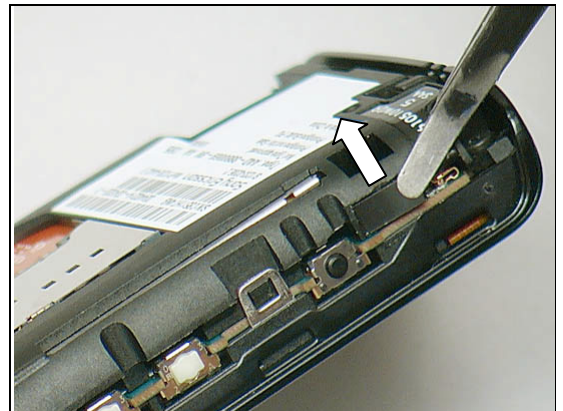
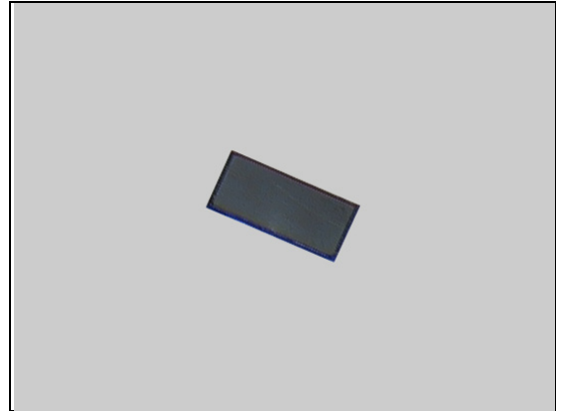
Follow the 3.1 Disassembly instructions!

Prepare the new Tape Water Ingress.

Follow the 5.6 Reassembly instructions!

REMOVAL

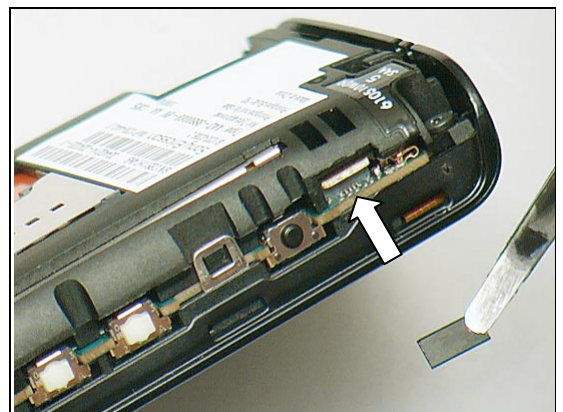
Detach the Tape Water Ingress with a pair of Tweezers.



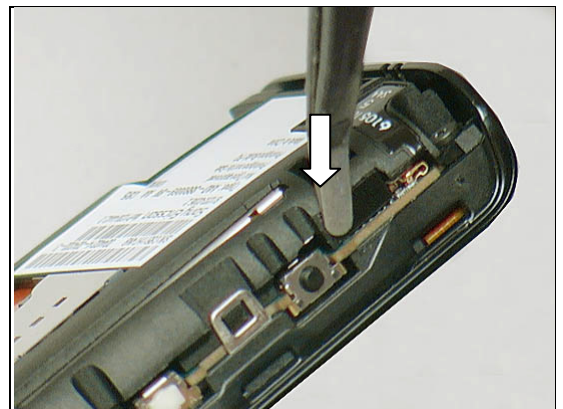
INSTALLATION

Mount a new Tape Water Ingress.

Note that there is only adhesive on two edges of the Tape Water Ingress.



Press to secure the attachment.





Replacement

4.37 Water Indicator 3 x 3

INSPECTION

Check whether the Water Indicator 3x3 has been activated (reddish color).

If activated:

Follow the 3.1 – 3.4 Disassembly instructions!

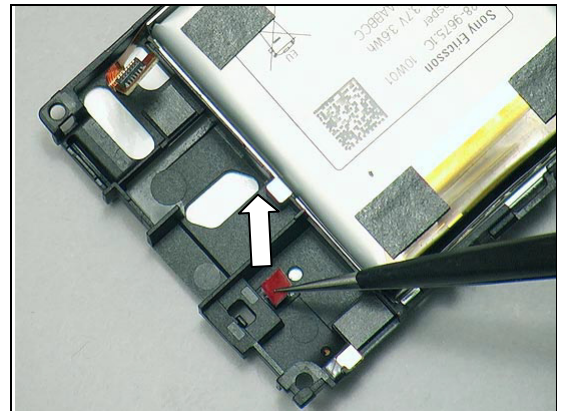
Prepare the new Water Indicator 3x3.

Follow the 5.3 – 5.5 Reassembly instructions!



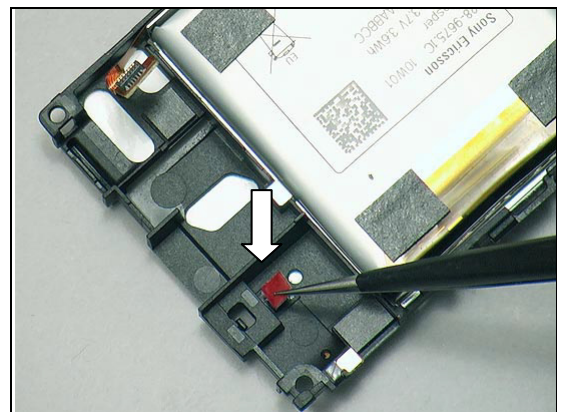
REMOVAL

Detach the Water Indicator 3x3 with a pair of Tweezers.

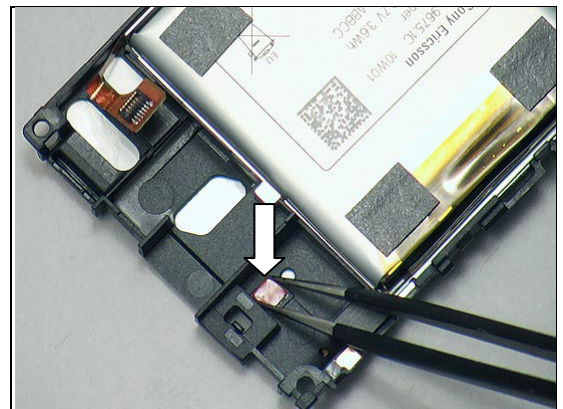


INSTALLATION

Install a new Water Indicator 3x3.



Press to secure the attachment.



Replacement

4.38 Window Camera

Follow the 3.1 – 3.4 Disassembly instructions!

Follow the 4.17 Removal instructions!

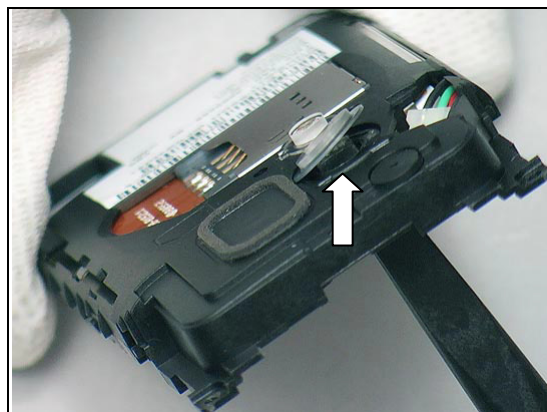
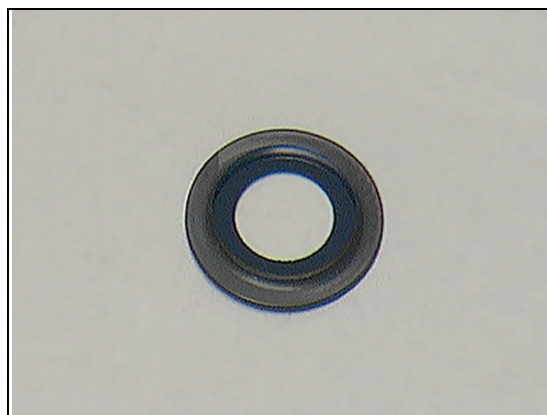
Prepare the Window Camera.

Follow the 4.17 Installation instructions!

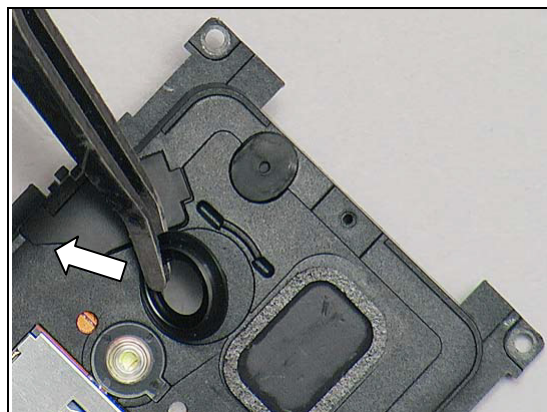
Follow the 5.3 – 5.6 Reassembly instructions!

REMOVAL

Push against the Window Camera from the back side with a Nylon Pointer.



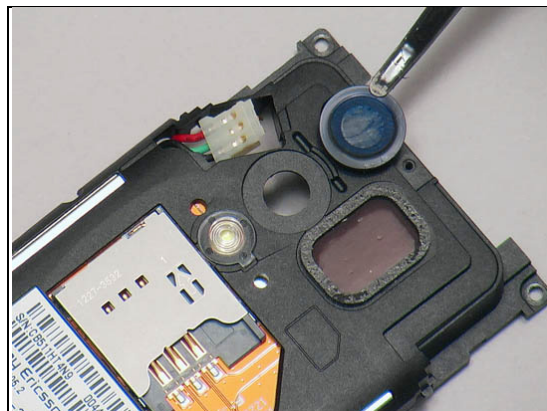
Detach to remove it with a Flex Film Assembly Tool.



INSTALLATION

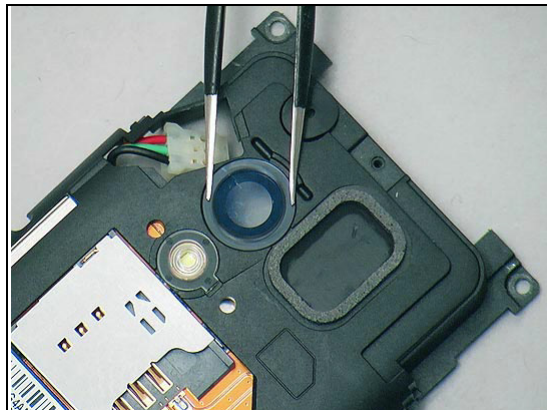
Mount a new Window Camera.

Be careful with the Window Camera. Do not scratch.



Replacement: Window Camera

Press to secure its attachment.



Replacement

4.39 Board Swap - Replacement

Follow the 3.1 – 3.6 Disassembly instructions!

Follow the 4.8 and 4.32 Removal instructions!

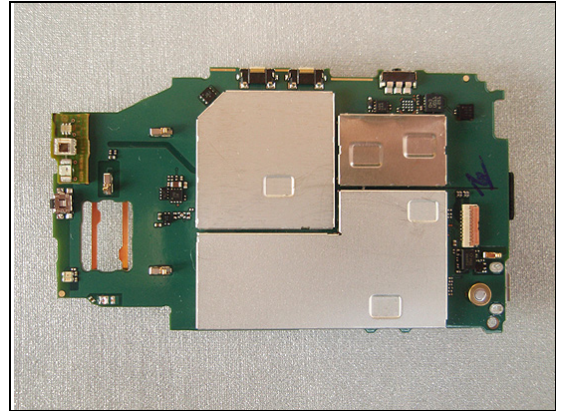
Replace the Swap Board.

Reuse the Camera 5 MPixel

Follow the 4.8, 4.14, 4.15, 4.18, 4.20 (4pcs) and 4.32 Installation instructions!

Follow the 5.1 – 5.6 Reassembly instructions!

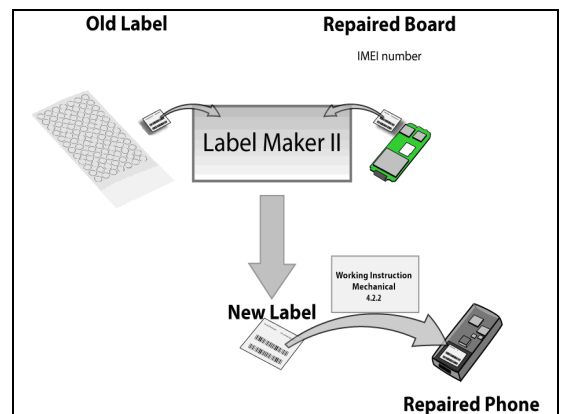
Startup the unit to initialize settings, before performs Customize Phone in Emma.



4.40 Board Swap – Change Label

CHANGE LABEL

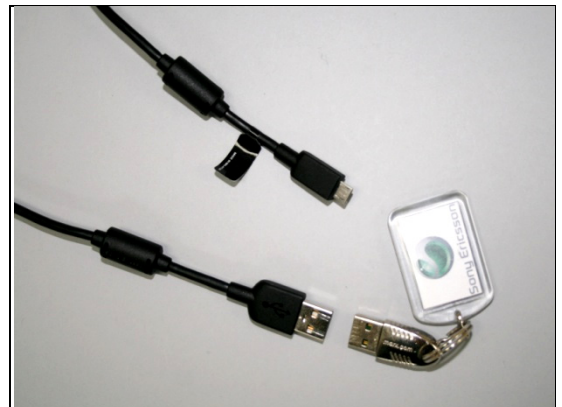
Follow the instructions in the Generic Repair Manual – Build swap for change of label.



4.41 Board Swap – Customize of Software

CUSTOMIZE OF SOFTWARE

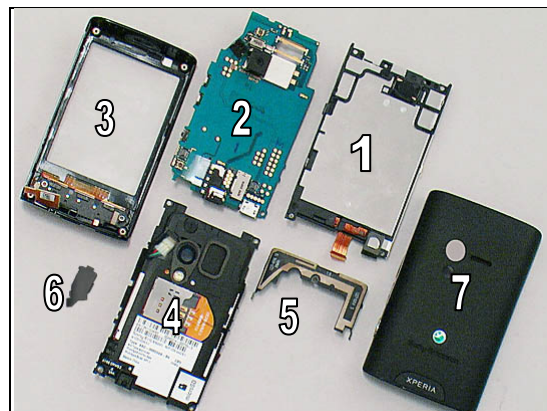
Follow the instructions in the Generic Repair Manual – Build swap for customization of the software.



5 Reassembly

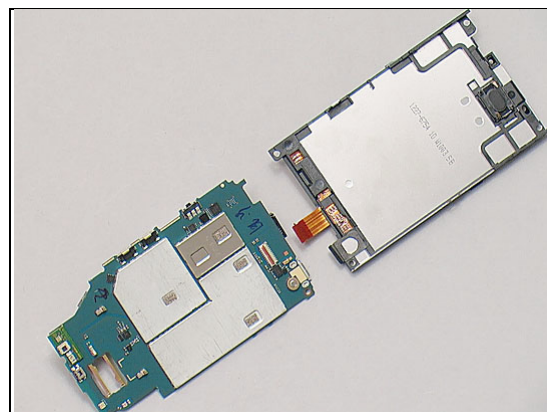
The reassembly is done in the following order:

1. Support LCD
2. Main PBA
3. Cover Front
4. Inner Frame
5. Antenna
6. Cap Battery
7. Cover Back

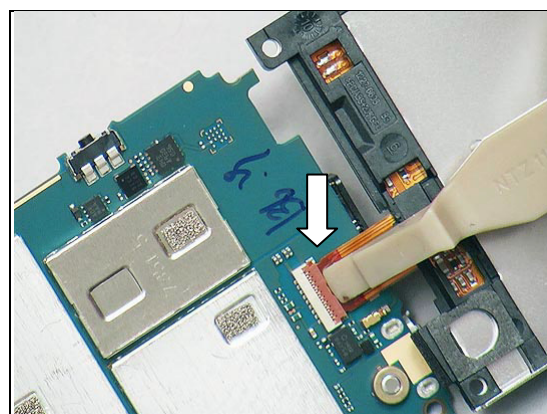


5.1 Support LCD & Main PBA

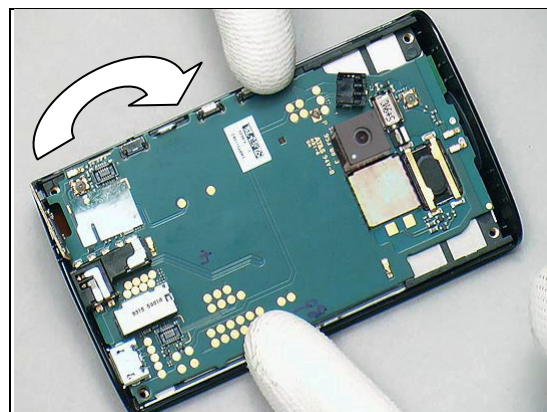
Place the Support LCD & the Main PBA next to each other.



Connect the ZIF connector.



Turn over the Main PBA and press.

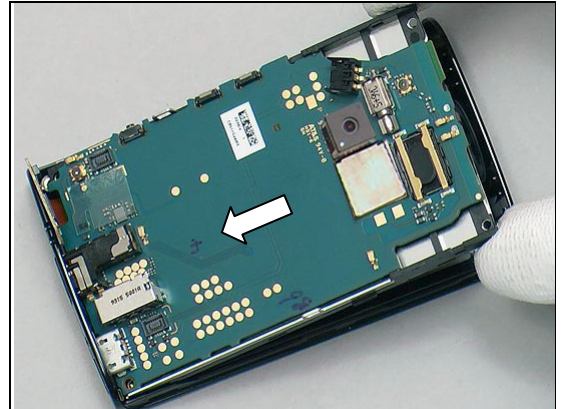


Reassembly

5.2 Cover Front

Place the Support LCD & Main PBA into Cover Front at approximately 30 degrees.

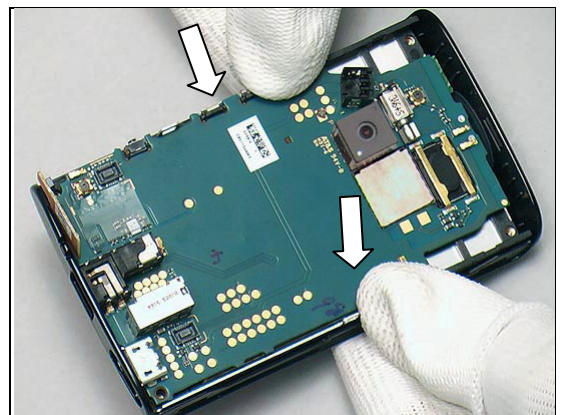
Insert the USB connector and AVP connector first.



Press to snap the Unit.

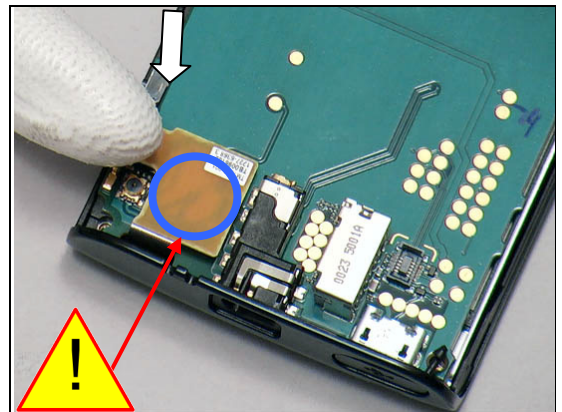
Make sure the flex film with BtB connector is above the Main PBA before pressing.

Listen for the click sound.



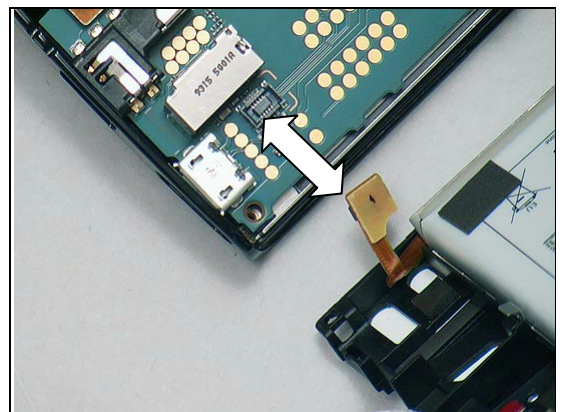
Connect the BtB connector with a finger.

Do not press in the area marked with a circle.
Press on the connector.



5.3 Inner Frame

Align the Inner Frame with the BtB Connector on the PBA.

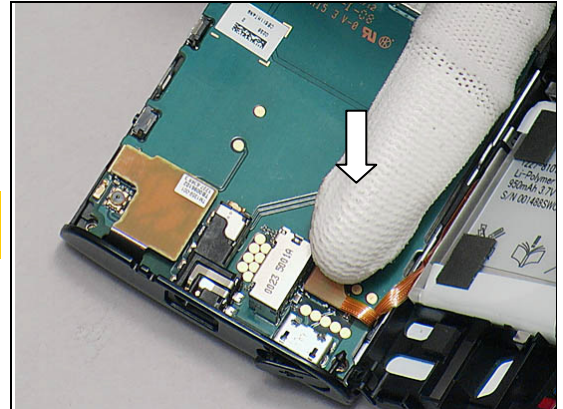




Reassembly

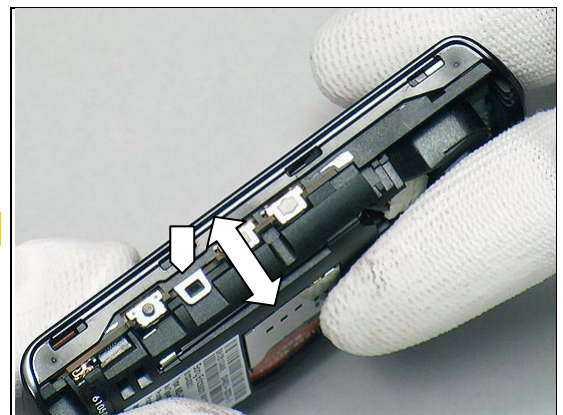
Connect the BtB connector with a finger.

The 'tail' of Cap USB and Battery Connector should not be squeezed between the main PBA and Inner Frame.



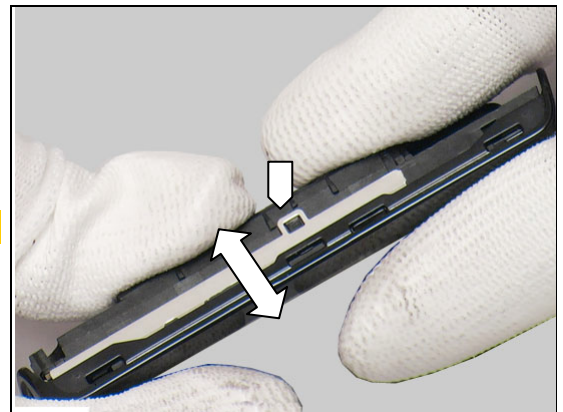
Turn over the Inner Frame and press the hook.

Listen for the click sound.



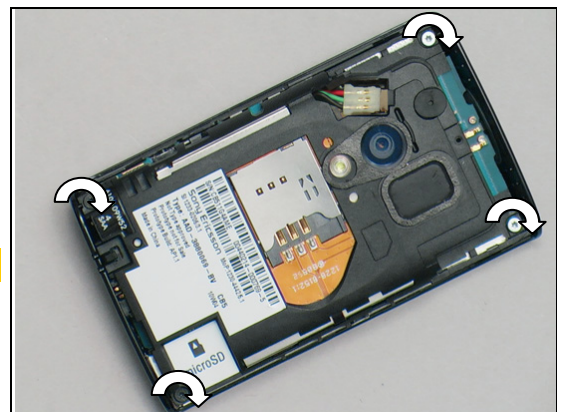
Do the same on the opposite side.

Listen for the click sound.



Apply 14 +/- 0,7 Ncm torque when tightening **two** Screw Torx 3.55x3.0 M1.4 and **two** Screw Torx 5.2x3.0 M1.4 with a screwdriver with a T4 bits.

Take new screws!

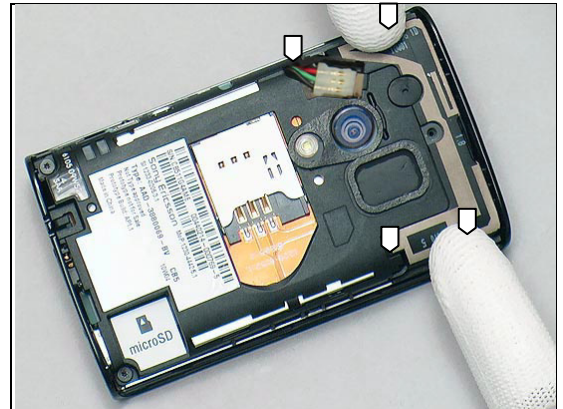




Reassembly

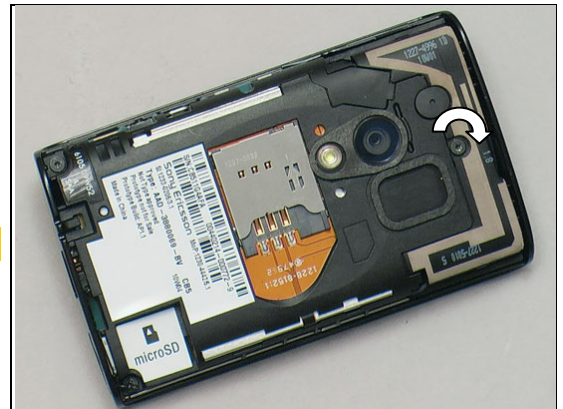
5.4 Antenna Main

Press to snap the four hooks on both sides.



Apply 14 +/- 0,7 Ncm torque when tightening **one** Screw Torx 3.5x3.0 with a screwdriver with T4 bits.

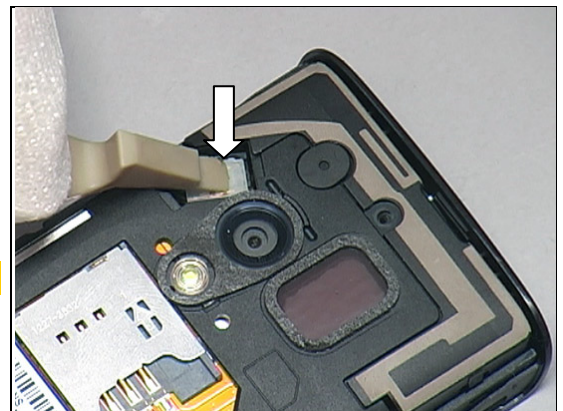
Take a new screw!



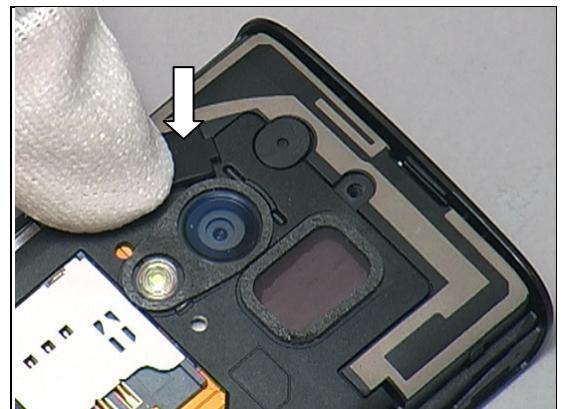
5.5 Cap Battery

Press the Battery Connector in place with a Front Opening Tool.

Do not damage the battery.



Press the Cap Battery in place with a finger.



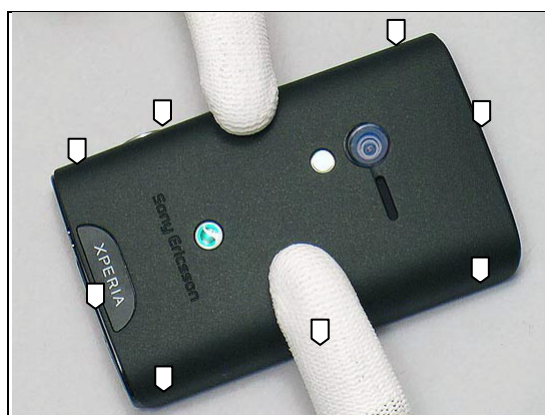
Reassembly

5.6 Cover Back

Place the Cover Back in 30 degrees angle.



Press to snap the eight hooks.





6 Country of Origin Barcodes for Brazil

Below is a link to a list of countries of origin. If you are printing a Brazil or VIVO label, scan the barcode corresponding to the correct country of origin for the “Fabricado” field.





7 Revision History

Rev.	Date	Changes / Comments
1	2010-May-24	Initial release
2	2010-June-28	Improved instruction for replacements of the Battery Assy 4.7 Added instruction for Board Swap 4.40-4.42
3	2010-Sept-24	Due to system failure. No changes.
4	2010-Sept-24	Due to system failure. No changes.
5	2010-Sept-25	Added barcodes for Brazilian
6	2011-Jan-10	Correction of a few cross references.